

# Gasoline Station Owners Unhappy, Worried About Allotments

Although gasoline is not the hottest commodity in the village for the people who live here, as it has become for people in other parts of the country, it is a cause of concern among the men who earn their money from it.

The cautious optimism felt by many who read in daily newspapers William Simon's comment on March 7 that "all states will get an increase in gasoline supplies this month," may have led them to greet their local service station owner with a bit more gusto, but it's unlikely the owner responded in the same vein. Things just aren't that simple.

Take Earl Pratt's situation, for example. Pratt ("It's just Red") is the manager of Red's Standard on Main St., which received for this month 75 percent of its March 1972 gallon-

age, which is five percent down from what he received last month.

Pratt simply doesn't believe that there's a gas shortage, though. He blames shortages on "Tricky Dick" and says, "even when the government gets its hands out of the Middle East and the embargo's over, it'll be July or August until we can pump all we want."

Presently Pratt has worked out a system of opening from 7:30 a.m. until around 10 a.m. and then closing until approximately 3 p.m., when he opens and remains open until he sells his daily gas quota. "I try and stay open when people who really need the gas are on the road—people going to and from work, not people who are just traveling."

Pratt also complains that his back room mechanic business has

been hurt by his erratic closings. "If you don't have a product to sell out front, people aren't going to come in for the rest of the stuff."

"I've got every cent I have soaked into this place," he concluded. "And I could pump every bit of gas I have in 10 days. If somebody doesn't do something pretty soon, all the dealers are going to go under."

Ralph Fletcher, of Four Mobil, who like Pratt is experiencing shortages between what he gets and what he could pump, has turned the situation at least somewhat to his own advantage.

"I had to close up for three days at the end of February, and five days at the end of January," Fletcher said. "But this month I'm going to close when I want to. I'm closing on Mondays now, in addition to Sundays."

Fletcher has put a \$5 limit on purchases to "make sure I have gas for everybody who needs it." His allocation for this month is at 85 percent of 1972 levels, and judging by the amount he has been forced to close, it is simply not enough.

"I don't think the company even knows what's going on," Fletcher reported last week. "They won't even talk to me about this—they're just real indecisive about the whole thing."

Likewise, Gene Shoemaker of Jiffy Market's Marathon pumps is unsatisfied with the information he receives from higher-ups.

"These people tell you very little," Shoemaker says, but what he has heard from Marathon, minimal though it might be, has been enough to make him declare his personal situation "lousy."

Shoemaker was recently in-

formed that Marathon intends to cancel his pump rental, which, he says, "means about \$10,000 a year for me."

Basically Shoemaker's pump set-up with Marathon is that, since he can't give him a price break on the gasoline they supply him, they pay for the rental of the pumps, under a five-year contract that is renewable every year.

The situation is further complicated in Shoemaker's mind by the fact that Marathon recently delivered new pumps to his station. Why bring new pumps if there's no intention to renew?

Shoemaker doesn't know. The Jiffy pumps are "wide-open," Shoemaker says, from 7 a.m. to 10 p.m., although he receives only 60 percent of the gas he could pump at what he considers, along with many others, his "unreasonable" price of

59.9 cents per gallon for regular.

"I was selling gas for half that price just a year ago," he says. "I'm just not happy at all with this stuff."

Other dealers in the area are not nearly so glum, however. Bill Sprentall, who last fall was in the depths of gloom when questioned by The Standard, reports that his Marathon allocation is up to 85 percent of his 1972 levels, compared to approximately 80 percent last month.

Sprentall thinks that the oil companies are "feeling the pressure from the public and the government" and things will gradually pick up.

Glenn Heim of Glenn's Mobil agrees that "things will open up for the people." Heim attended a Mobil dealers convention some months ago, at which executives explained "that this was going

to happen, primarily because of conversions from coal to fuel oil, and that it was up to the government to do something."

He predicts that the situation will be more open in the summer, noting cheerfully that "Simon says so."

Tower Shell's manager, Curt Alden, although reporting that his allocation is down some 15 percent from February, seems pleased by the business he is generating in his station, strategically located as it is for highway customers.

Alden has cut back one hour per day in order to keep his station open on Sundays, and the results have been encouraging. "The guys who were working told me that people were lined up Sunday when they came in to work. I just said, 'wow!'" Alden took over Tower Shell

in May of 1973, and signed a contract with Shell last October for the station. "It's really hard to judge things in my case—comparisons with other years, I mean," Alden noted.

Only Choker manager Rick Price was reticent about his station's relative good or bad fortune in the gasoline world. He said that he had no information about allocations "until the end of the month."

Several other dealers commented darkly on Choker's gasoline, by endless supply of gasoline, without speculation of the why or how of its source. "Nobody really knows much about that place," said one.

Each only knows for sure about his own, and even what they know about that is tinged with the inconclusiveness of information from a source that deals only remotely with them.

## WEATHER

	Min.	Max.	Precip.
Wednesday, March 13	24	37	0.00
Thursday, March 14	19	39	0.00
Friday, March 15	30	41	0.18
Saturday, March 16	25	34	0.00
Sunday, March 17	29	40	0.00
Monday, March 18	27	41	0.00
Tuesday, March 19	28	41	0.02

By H.K.L.

# The Chelsea Standard

ONE HUNDRED-FOURTH YEAR—No. 40

14 Pages This Week

CHELSEA, MICHIGAN, THURSDAY, MARCH 21, 1974

15c per copy

SUBSCRIPTION: \$4.00 PER YEAR

## 'Mame' Opens Tonight With Eager Cast

After eight weeks of rehearsals, securing props, locating and sewing costumes, and designing drops, Chelsea High school's production of "Mame" opens tonight at 8 p.m. in the high school auditorium.

The word from cast, crew, and director DiAnn L'Roy as of last Friday night's rehearsal is "We've got a show!" Friday's rehearsal was the first which included all props, drops, and costumes in other words, the real thing minus only the audience.

When the audience enters the auditorium tonight and Friday and Saturday nights, it will see with its collective critical eye only the end result of numerous hours of planning, repeating, and altering which have touched each member of the production—from the "stars" and director L'Roy down to the "lowest" but still integral contribution of crew members.

It's easy to visualize what might happen with the absence of one of those gremlin-like crew members: it's a big dance scene like "It's Today" and there's still a table of some similar obstruction in the middle of the dance floor, which might make it a little difficult to step, as high as choreographer Jjan Yocum would like.

Or it might be the big scene at Mame's house when the Upsons and daughter Gloria, Patrick's fiancée, arrive for a visit. Each one of Mame's assorted friends and cohorts adds to the color of the scene and to the Upsons' pervasive sense that their way of life would be invaded by "the wrong kind" by their daughter's marriage to Patrick. Remove one character and part of the aura of lunacy is lost.

True, characters like the flamboyant Mame, her "bosom buddy" Vera Charles, Beauregard Burnside, and Patrick are characters who loom large next to some of the others, but Mame needs her Ito just as Vera needs her Moon Maids, just as Beau needs his mother and Sally Cato to make their characters into living people.

Some tickets remain available for performances on all three nights, with standing room sold at the door. Curtain time is 8 p.m.

## Contest Set For Picture on Band Calendar

An original picture to adorn the 1974-75 Band Boosters band calendar is the object of a contest announced this week by Chelsea Band Boosters. First prize winner in the contest will receive a \$25 prize in addition to having his winning artwork displayed on the calendar.

Second prize is \$10 and third prize is \$5.

Contest rules stipulate that the drawing must be an original one; it must center around a music theme; the drawing itself must be 3½ in. high by 7 in. wide, or in that proportion; and the drawing must be in black and white.

The contest is open to any student enrolled in Chelsea schools. Entry should be submitted no later than May 10 to band director Warren Mayer.

## Parent-Teacher Conferences Set At Beach School

Beach School teachers will be available for conferences with parents on March 28 from 12 noon to 6 p.m.

Appointments for 15-minute conferences may be made by phoning the Beach school office, 475-8601, during the school day on March 25, 26, or 27.

Students will be dismissed from school at 11:15 a.m. on March 28 and buses will run shortly thereafter.



ALL EYES ARE ON AGNES GOOCH, played by Jodi Daniels, as some of the principals in the high school's production of "Mame" gather around for the last bit of excitement that shows Patrick how right Auntie Mame can be. Seated on the couch are Mrs. Upson (Polly Van Slambrouck), Agnes, and Mr. Upson (Dave Tucker). Gathered around them, clockwise from far left, are Teresa

Ottoman, Howard Salyer, Laura Cordin (playing Gloria Upson), Dale Heydlauff (the mature Patrick Dennis), Keith Cockerline, Pat Knickerbocker (Mame), Michelle McClellan (Vera), Nancy Hepburn, and Dave Clemons (Mr. Babcock). "Mame" will open tonight (Thursday, March 21), in the Chelsea High school auditorium, and run through Saturday, March 23.

## Junior High Bands Score Well in Festival

Both the 7th and 8th grade bands earned over-all records of 11's in last Saturday's Class B band competitions.

The 7th grade band, which traveled to Saline, earned a pair of 11's in its concert portion, but fell to a 10 in sight reading, to average 11.

Band director Warren Mayer stated that he was "pleased with the way the 7th graders performed."

One judge rating the performance said that "good fundamentals of music and sensitive musicianship is being established in this band."

Another stated that "you have many excellent individuals. I enjoyed hearing your fine band."

Mayer expressed his appreciation to those who chaperoned the outing: Mrs. Don Marshall, Mrs. Inbody, Jim Stirling, and Bob Van Riper.

Ron Harris, reporting on the 8th grade competition, said that the

(Continued on page seven)

## Forensics Team Wins Tourney

Team depth told the story this week-end as Chelsea High school's forensics squad swept the Brighton Invitational Tournament for the second time in as many years with a big total of 125 points. A total of 22 Class A and Class B high schools were entered in the competition.

Although Chelsea's entries earned five individual trophies for their performances, forensics coach William Coelius declared that "the real reason we won was due to our team depth. Trophy winners accounted for only 25 points of our total. This team has more depth than any I've ever coached."

Receiving first-place individual trophies were David Klemmer for his radio broadcast and Greg Haller for men's extemporaneous;

earning second-place trophies were Brad Glazier in men's oration and Brenda Shadon in women's extemporaneous; and taking a third-place trophy was Dale Heydlauff for his serious reading.

Those who added points and thus were the components of "team depth" that Coach Coelius mentioned included the following:

In serious reading, scoring points were Jane Buxton, Jeanne Thornton, Sara Johnson, and Sue Shaw. Earning points for declamation were Lynette Schiller, Colleen Coomes and Erin Headrick, who was a finalist and finished fifth.

Radio newscasting points were scored by Steve LaBarbara and Rick Robbins, who was a finalist and placed fourth.

Steve Bennett and Chuck Clemons received points for men's oration.

In women's oration, receiving points were Shelly Porath and Sharon Schiller, who was a finalist and placed fifth.

Kurt Allhouse earned points for men's extemporaneous.

Robin Schneider and Paul Dowhal earned points for their humorous readings.

In storytelling, point-getters were Merry Hoffmeyer, Skip Foylik, Mary Helen Gilday, and Terry Knickerbocker, who was a finalist and placed eighth.

Multiple reading by "Wake for the Living"—a group composed of Mike Tobin, Tom Hafer and Dale Schoenberg—earned points and "Himself"—composed of Larry Doll, Doug Schrotenboer, Bill Karbach and Dan Leonard—was a finalist and placed fourth.

District competition is scheduled for next Wednesday, March 27, at Chelsea High school. Local participants will be limited to those listed in last week's issue of The Standard as finalists.

## Edward Beeman Dies Following Auto Crash

A Chelsea youth died Tuesday of injuries sustained in an automobile accident on Old US-12 four days earlier.

Edward R. Beeman, 20, of 15775 Cassidy Rd., had been in critical condition at St. Joseph Mercy Hospital in Ann Arbor, since the time of the accident, 9:15 p.m. Saturday, Washtenaw County Sheriff's deputies reported.

Also injured in the crash, but in good condition at University Hospital, were Kenneth Lee Neal, 61, of 548 N. Main, his wife, Mabel,

56; and son, William Lee Neal, 37.

Sheriff's deputies report that Beeman was eastbound on Old US-12, apparently traveling at a high rate of speed, possibly up to 90 miles per hour.

He failed to negotiate the curve in Old US-12 just past Freer Rd., skidding into the westbound lane, where he was broadsided by the oncoming Neal car. Still traveling, he then struck a telephone pole.

Funeral services will be conducted Saturday, March 23, at Burghardt Funeral Home. Burial will follow in Waterloo Cemetery.

## Walker Has Chance at Millionaire Drawing

Edward G. Walker has a lot of time for wishing and hoping between now and next Tuesday, March 26, and that's exactly what he's doing.

Walker, who is employed at Chrysler Proving Grounds, is one of the lucky 120 semi-finalists for next Tuesday's million dollar lottery drawing to be held in Wyandotte, all because of a lottery ticket he purchased at Jiffy Market.

"I buy two tickets—just \$1 worth—whenever I think of it, but there have been weeks and weeks when I didn't buy any at all," Walker says. "I just never took it seriously—I never thought that out of the thousands and thousands of people buying tickets I'd win anything. I've never won anything in my life."

As a semi-finalist, Walker has already won \$1,000. Only ten of

(Continued on page seven)

## School Millage Vote Scheduled Next Tuesday

The Chelsea school district operational millage election is scheduled for Tuesday, March 26, at Dwight E. Beach Middle school. All registered voters are eligible to vote.

The Board of Education request is for 14.78 mills for two years, which, when considered with a reduction of one-half mill in the debt retirement levy, represents a net increase of 3.3 mills over the present voted millage, or in dollar terms, \$3.30 per thousand of assessed valuation.

At Tuesday night's public meeting, board members pointed out that the wording of the new Bursley State Aid Act is such that our school district will lose \$340,000 compared to what it would have received under previous State Aid Acts, an amount equal to the gain in income from growth in the assessed valuation in the Chelsea School District.

The goal of this new law is to equalize the income per pupil in school districts across the state. Previous State Aid Acts have favored poorer districts to some extent, but the new act guarantees absolute minimum income per student in every district, provided the district levies at least 25 mills and puts the burden of financing these poorer districts on those who have a higher assessed valuation per student.

Most people involved in education at the state level agree that had the Bursley bill not been passed, the courts would have thrown the old State Aid Act out as unconstitutional because of the unequal education opportunities it created. These considerations are significant at the state level, but do not change the devastating effect it has on the Chelsea School District's income for next year.

Board President Howard Haselschwardt emphasized that the board has studied the proposed budget for the past six weeks and has made many cuts in the original proposal in an effort to be

absolutely certain that the millage request is not over-stated.

He said, "We as a board, and the voters of the District are faced with the cold, hard facts that the costs of running our schools increases from year to year simply because of the inflationary pressures in our economy, and with the present State Aid Act, the only means of raising this money is through additional millage."

"I am certain that it is not the intention of the voters in this district to tear down the fine educational program that we have built up over the past years, but rather as they have demonstrated in previous millage elections, to continue their support. The board's problem in this election has been to acquaint the voters with provisions of the new State Aid Act, the loss of income to our district that results, and the importance of this to the future of education in our schools."

Haselschwardt further stated that "based on the state's present tax rebate plan, which returns, to the taxpayer, 60 percent of the difference between 3.5 percent of annual income and the total property tax paid, in most cases, only 40 cents of every dollar of additional income is retained."

## Four from CHS Going to State Music Festival

Four members of Chelsea High school's band who earned 1 ratings in district festival will compete in State Solo and Ensemble Festival competition this Saturday, March 23 at Ferndale High school.

Those entered in the festival are Duane Luick, who was honored at districts for his trumpet solo; David Klemmer, who earned praise for his tympani solo; and Kim Longworth and Patricia Spencer, who were commended for their flute and clarinet duet.



TROPHIES from the Brighton Invitational are displayed by the five individual forensics competitors who earned them. From left, are Dale Heydlauff, who placed third in serious reading; Brad Glazier, who placed second in men's oration; Greg Haller, who placed first in men's extemp.;

David Klemmer, who placed first in radio broadcasting; Brenda Shadon, who placed second in women's extemp.; and proud coach William Coelius, Chelsea's squad swept the Brighton Invitational for the second consecutive year.



50 YEARS OF CHELSEA KIWANIS was the occasion that brought these four—Mr. and Mrs. M. W. McClure and Mr. and Mrs. Bud Guest—gathered at Monday night's Kiwanis birthday celebration. McClure, the only living charter member of the 50-year old organization, and Guest, featured speaker for the evening, were two highlights of the evening's activities.









THE ART OF STORYTELLING, by one of the men who knows it best, Bud Guest, was one of the featured highlights of Monday night's Kiwanis birthday celebration as the evening's major speaker. The evening marked 50 years of Kiwanis community service and was attended by more than 200.

### Scholarship Deadline Near For High School Juniors

College-bound juniors who think they have another year of unadulterated high school bliss stretching before them prior to making college plans should take heed of an announcement from the Michigan Department of Education, recently released through a flyer to students and their parents at Chelsea High School.

The announcement outlines the correct procedures and pre-requisites necessary to applying for State scholarships, tuition grants and Michigan guaranteed loans.

State scholarships are based upon academic talent, as determined by the American College Test, and the financial need of the individual students. Recipients are eligible for scholarships ranging from \$100 to \$1,500 when enrolled in a full-time academic program, at

either public or independent colleges and universities. The scholarships are renewable for up to five years, dependent upon the continuing financial need of the student and continued good academic standing.

Juniors who intend to apply for state scholarships should note that they may take the American College Test on three dates—the "primary" date, April 27 (final registration date, April 1), and two "alternate" dates, June 15 (final registration date, May 20), or Oct. 18 (final registration date, Sept. 30). Those taking the test after the Oct. 18 date are considered late applicants and are only considered for scholarships if state funds are available.

Chelsea High School counselors, while not overly stressing the April 27 date, do point out the available dates for current juniors, and the fact that all tests will have Chelsea High School available as a test center.

Other qualifications that those applying for state scholarships must meet include: student must be a U.S. citizen or have declared an intention to become one; student must be a resident of Michigan since Jan. 1, 1974; student must be recommended by respective high school; and student must demonstrate financial need.

Financial need is determined by the state through the filing of a parents' confidential financial statement with the Michigan Department of Education.

Tuition grants, also ranging in amounts from \$100 to \$1,500, are available only to students who will attend independent colleges and universities, and are renewable yearly contingent upon continuing financial need. There is no "academic excellence" criterion attached to tuition grants as there is to scholarships.

Students intending to apply for tuition grants need not take the ACT. Other requirements are the same, except that applications must receive a Tuition Grant application from their high school counselors and submit it to the Michigan Department of Education.

Ineligible for tuition grants are those students enrolled in programs of theology, divinity, or religious education, or students who have taken vows or otherwise pledged themselves to a religious vocation.

Those intending to enter college in September of 1975 must make application for tuition grants by Dec. 20 of this year.

Michigan Guaranteed Loans may be obtained by students through participating banks, savings and loan associations, or credit unions, and will provide up to \$1,500 per academic year for a full-time student.

A student enrolled less than full time but more than half time is eligible for up to \$750 per academic year.

Maximum annual interest rate for the loans is seven percent. Repayment begins nine months after graduation or after reduction in class hours to less than half time. The repayment plan itself is set by the lending institution.

## Revised Plan Scales Down Proposed Park

When the original plan for a Mill Creek Metropark was presented at Lima Township Hall in November of 1970, a lot of people got up in arms and started making independent declarations like "We won't sell to HCMA!"

After three and one-half years, Huron Clinton Metropolitan Authority has come up with what it terms a "refinement" of that presentation, which basically amounts to the same plan on a somewhat smaller scale.

A position statement released by the Mill Creek Research Council during the heat of the controversy surrounding the park said that "the issues range from the destruction of irreplaceable farmland to the removal of land from the tax roll, the impact of the park on the region, the doubt over the need for a park of this description and in this place, and finally on to the right of the community to determine its own fate."

HCMA, calling some of the residents' objections to the metropark "valid" in a statement released Monday, nonetheless ignored a number of those very objections when it approved last Thursday a "refinement" of the land use plan, with revised boundaries, and a "Mill Creek Water Quality Evaluation" report.

As high points of its latest plan, HCMA points to the scaled down size of the park to 3,500 acres from the original 4,900 acres presented in 1970. In addition to 1,400 fewer acres involved in the project, this means that 21 fewer currently-occupied homes will need to be obtained by HCMA. A total of 44 homes now stand on land designated for the proposed Metropark.

HCMA director David Laidlow is certain, however, that "the Mill Creek Metropark project still contains a wide variety of recreational facilities characteristic of a major Metropark without changing the basic concept."

In addition, the refined proposal states that Fletcher Rd. and Scio Church Rd. will remain primary traffic routes in the township, with only some realignment of the rights-of-way.

The cul-de-sac of Lima Center Rd. has been eliminated under the new plan, with Jerusalem Rd. retained between Lima Center Rd. and Dancer Rd., thereby permitting traffic flow of both roads north and east from their intersection.

The modified proposal also mentions a pair of water quality and hydrology studies of the type so emphatically and originally suggested by Mill Creek Research Council, that report in effect that everything is A-OK.

The first study, submitted in the summer of 1971 by Dr. E. F. Brater and Dr. E. B. White of the College of Engineering of the University of Michigan, concludes that "from a hydrological standpoint there seems to be no reason why the proposed lake could not be created in a satisfactory manner."

A report dated March, 1974 by Dr. John J. Gannon, professor of Public Health Engineering of the University of Michigan, states that "creation of two separate basins in a series would allow settling of solids to occur in the upper basin, thereby contributing to the clarity of water to be used for bathing in the lower basin."

The upper pond is proposed now to contain about 100 acres of water, and the lower pond about 500 acres.

Finally, the refined plan notes that HCMA presently has two alternatives for the transmission line, "one" retaining the "towers" of the present alignment and reducing the size of the lake, and the other retaining the lake design and relocating part of the power line within the park, both of which, it says, "are feasible."

Design engineers also report in the plan that sanitary treatment for the park can be contained within the boundaries of the project itself, independent of any existing treatment plants.

In a related development, the 9th annual meeting of the Mill Creek Research Council has been announced for Tuesday, March 26, at 8 p.m. in Lima Township Hall.

A public hearing on the revised plan will be held in April or May, and a revised environmental impact statement will probably have to be prepared for submission to the Bureau of Outdoor Recreation, which is presently reviewing the statement submitted on the old proposal.

**CHELSEA FINANCE CORP.**  
\$25 to \$1,500  
For Any  
Worthwhile Purpose

See or Call  
**FRANK HILL**  
at 475-8631

111 PARK STREET  
CHELSEA, MICH.

## NOTICE TO CHELSEA VILLAGE RESIDENTS

The 1974 tree planting program will be carried out during April.

Any village resident who wants a tree planted on his lawn extension should call 475-1771 before April 1, 1974.

**VILLAGE OF CHELSEA**

F. WEBER, ADMINISTRATOR

# Jiffy market

Big Enough To

Serve You . . . Small Enough To Know You!

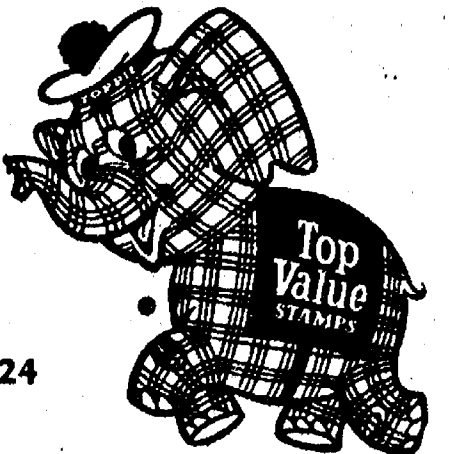


Full Line Supermarket  
BEER - WINE - LIQUOR  
AUTHORIZED  
FOOD STAMP STORE  
LOTTERY TICKETS  
MARATHON GAS PUMPS  
2-CYCO GAS PUMPS

Open 7 Days A Week  
7 a.m. to 10 p.m.

Corner Sibley & Werkner Rds.  
PHONE 475-1701

Sale Prices Effective  
Thurs., Mar. 21 thru Sun., Mar. 24



## BEEF CHUCK ROAST

U.S.D.A. GRADE CHOICE

BLADE CUT . . . . . 89c lb.  
CENTER CUT . . . . . 99c lb.  
ROUND CUT . . . . . \$1.19 lb.  
ENGLISH CUT . . . . . \$1.19 lb.



Tender Beef with Flavor!

FARMER PEET'S	MEADOWDALE HICKORY SMOKED	FARMER PEET'S	U.S. CHOICE	U.S. CHOICE
ALL-MEAT FRANKS	SLICED BACON	RING BOLOGNA	GROUND CHUCK	BEEF STEW
12-Oz. Pkg. 89c	\$1 <sup>19</sup> lb.	89c lb.	\$1 <sup>39</sup> lb.	\$1 <sup>39</sup> lb.

KLEEN-MAID

WHITE BREAD . 2 1-Lb., 4-Oz. Loaves 59c

RISDON'S HOMOGENIZED 1%

LO-FAT MILK . . . . . Gallon Carton 98c

BEAT THE HIGH PRICE OF MILK

CREMORA, Borden's 1 Pt., 1-Lb. Jar 69c

MAXWELL HOUSE - HILLS OR CHASE & SANBORN

COFFEE . . . . . 1-Lb. Can 98c

ALL BRANDS & SIZES — CHECK OUR PRICES ANYWHERE!

CIGARETTES . . . . . Your Choice Per Carton \$3<sup>37</sup>

VELVET CREAMY OR CRUNCHY

PEANUT BUTTER . . . . . 3-Lb. Jar \$1<sup>49</sup>

LARGE VARIETY MEIGHT WATCHERS

SODA POP . . . . . 12-Oz. Can 9c

LARGE ASSORTMENT REG. 39c PKG.

COLONIAL COOKIES . . . . . 3 pkgs. \$1

BORDEN'S

CHEESE SLICES . . . . . 12-Oz. Pkg. 16 Slices 98c

U.S. GRADE A WHITE

FRESH EGGS . . . . . Large Size Doz. 69c

LENTEN SPECIAL — GORTON'S

40 FISH STICKS . . . . . 2-Lb. Family Pack \$1<sup>29</sup>

## MARATHON GAS PUMPS

BY TOP VALUE WE  
GIVING STAMPS SHARE

**FREE!!**  
100 TOP VALUE STAMPS  
with this Coupon at  
**JIFFY MARKET**

Offer Good Thurs., March 21 thru Sun., March 24

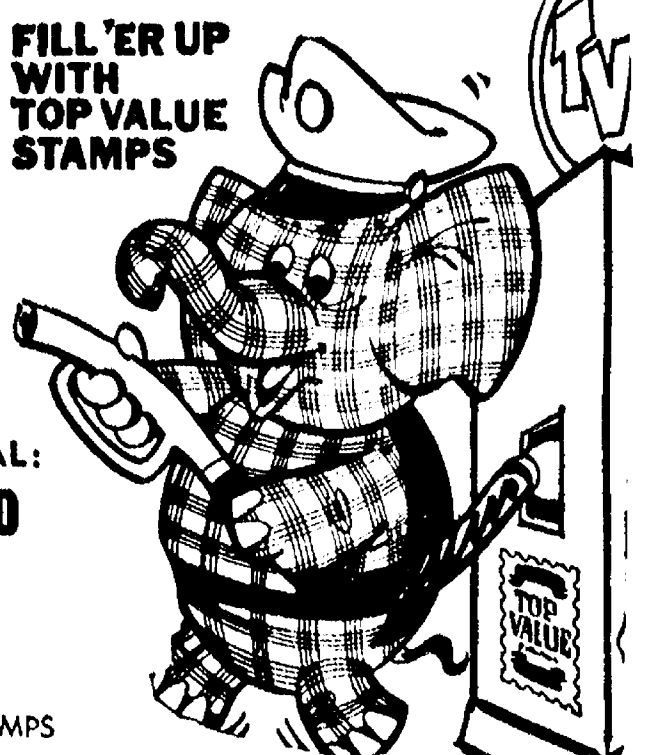
REG. 59.9 gal.

Includes all taxes  
Open 7 Days  
7 a.m. to 10 p.m.

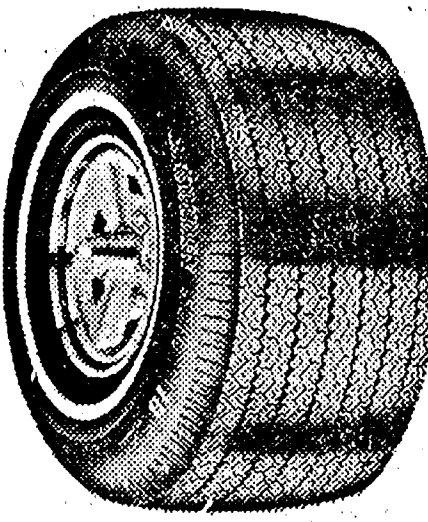
GAS PUMP SPECIAL:  
WINDSHIELD WASHER

59c gal.

FREE TOP VALUE STAMPS



**Sonic**  
HIGH QUALITY  
TIRES AT  
DISCOUNT  
PRICES



- ★ STEEL RADIALS ★
- ★ STEEL BELTS ★
- ★ Fibreglass BELTS ★
- ★ 4-Ply POLYESTER ★
- ★ NYLONS ★
- ★ MUD & SNOWS ★

OVER 200 CAR  
AND TRUCK  
TIRES IN STOCK  
AT ALL TIMES

WE HONOR  
MASTER CHARGE  
STANDARD OIL  
BANK AMERICARD  
AMERICAN EXPRESS  
DINERS CLUB  
CARTE BLANCHE  
CHARGE CARDS

Ask about our  
Free Replacement  
Guarantee



The Little Profit saves you  
more than anything you  
ever bargained for

COMPARE WITH  
ANN ARBOR PRICES

**PALMER FORD**  
51 Years in Chelsea  
Since April 1912

**Sonic**





## NORTH ELEMENTARY SCHOOL NOTES

### KINDERGARTEN—

Teacher: Mrs. Michelson

Number games are fun! Ruzzling Sean asked, "Are we learning right now?" Suspicions! "Guess we are learning when we play all the fun games." The leprechaun, the elves, the fairies or the tamen! Did they play tricks on you? What did they do?

Crystal brought us a St. Patrick's Day treat.

We heard the kildeer. They make nests on the roof of our school. And some of us saw robins and even blue birds. Mark brought an old nest to school. Steve brought a salamander.

We have forsythia blooming in our room, and the pussywillow are out. We have a few other plants also.

Skitter likes Skitter, our new black and white guinea pig. They coo to each other most of the time. Mrs. Stein's guinea pig comes in to look around sometimes.

Randy, Doris, Brian, Melinda, Mark and Laura—all from Mrs. Pietila's room—performed the play "Rapunzel" for us. They were very good. We saw a play in Mrs. Haffer's room once, also.

Our experiments with coughs and germs worked. We found out we have lots of germs on our hands and in our sneezes. One of really grew. That boy was out of school a week with a cold. He didn't think it was bad the day

he sneezed in the plastic covered container.

We still use the post office and mail box and work in the store. Maybe we can make an Easter hat store.

Everyone likes to make books and do work like 1st graders. We work quietly and by ourselves and try to remember all the directions. We learned more about measuring, time, temperature, weight, how long, how high, how wide and big some things are.

We made boats and sailed them in puddles. When we do things like that, everyone has to be dressed for it.

Printing is something we are just starting to do and everyone tries it with number stamps.

We are all happy spring is here! Hope it stays. Happy Easter!

### FIRST GRADE—

Teachers: Mrs. Packard, Mrs. Peebles and Mrs. Stein

Allasaurus, Brachiosaurus, Diplodocus, Stegosaurus, Tyrannosaurus—have you been hearing these names lately? Our dinosaur unit has stimulated interest in these extinct reptiles to the point where the children are becoming quite expert. This unit of study will be climaxed by a trip to the Ann Arbor museum to see the dinosaur display.

This month we were busy with a science unit, learning about our

five senses. We had things to taste, smell and hear. We tried to learn about things without seeing. We tried to learn by feeling things. We realized how lucky we all are.

We have been studying many different math concepts. What has a face and two hands but cannot talk? Learning about seconds, minutes, hours, long and short hands, half past, o'clock, days and nights a.m. and p.m. in our time unit was lots of fun. We have measured everything possible in our rooms, to learn about inches, feet, rulers, longest and shortest. We know about pennies, nickels, dimes and how to make change.

The following children had birthdays: Mrs. Peebles room: February birthdays for Robert Dall and Steven Kropf. March birthday for Troy Cousino.

Mrs. Packard's room: February birthdays for Yvonne Clark, Kenneth Lindow and Robert Mock. March birthdays for Mathew Grau and John O'Bryan.

Mrs. Stein's room: February and March birthdays for Paul Fletcher, Kevin Marshall and John Popovich.

### SECOND GRADE—

Teacher: Mrs. Walton

We have changed two of our reading groups, now we have Eagles and Dinosaurs. We are very excited about learning to write in cursive. We have been practicing the letters and some short words. It's a lot more fun than printing.

In math we are working again, with shapes and fractions. Some people have been working hard to get enough stars on their math to earn a treat.

In science we have been studying space. We saw how the earth rotates and revolves as it moves around the sun.

We are all looking forward to our spring vacation and we hope the weather is warm and sunny.

We only have two birthdays in March—David and Laurel.

### FIFTH GRADE

Teacher: Mrs. Crouch

Reporters: Donna Fitzsimmons and Tensel Caudill

Two weeks ago we sent in an article of what we thought about the energy crisis to Mini News on Channel 50.

We have also studied about the Civil War and we had a debate on slavery, and reports on people of the Civil War.

We have started to study about the metric system and also measuring things with the meter stick.

We have studied the newspaper for two weeks and enjoy it very much.

We all had our own science experiment and it turned out very well.

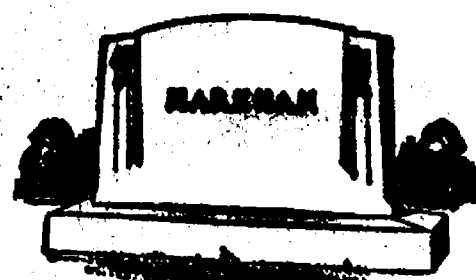
In the dental contest, Kathy Herrst won third place and received \$2.50.

The winners in our class of the 5th grade spelling contest were Kathy Herrst and Leslie Thomas.

Also we have class meetings. In our class meetings we talk about the energy crisis and the Hearst kidnapping and other things.

### GARDENING FANS

There's a new gardening magazine that's just out and it will be printed in several different foreign languages. The name of the magazine is "Weeder's Digest."



MAUSOLEUMS ★ MONUMENTS  
BRONZE TABLETS ★ MARKERS

**BECKER MEMORIALS**

5933 Jackson Road  
ANN ARBOR, MICHIGAN



NO GENERATION GAP exists between these Chelsea Girl Scouts and residents of the Chelsea United Methodist Home, who found each other tough competition when they met last Thursday at the Home for a few rounds of shuffleboard.

## Dunlavy, Bridges Advance to Finals in Recreation Basketball

Dunlavy Farms and Lloyd Bridges Chevrolet advanced to the finals in Recreation League action Tuesday night, with the final trophy-deciding game scheduled for Thursday night.

In Tuesday night's action, Dunlavy advanced to the finals by virtue of a convincing win over the Independents, 71-25.

Leading scorers for Dunlavy were Clark with 16 and Mull, Miller, and Elliot, with 14 each. Pacing the Independents was Guster with 10 points.

Lloyd Bridges Chevrolet had to come from behind, but also recorded a convincing victory, 53-39, over North American Rockwell, to gain its tournament slot.

High scorer for Bridges was Gary White with 19, followed by Steele with 10. Duke Weiss led Rockwell scorers with 16 points.

In last Thursday's games, Rockwell edged Brown Drug, 57-56, to gain entry into the semi-finals. Leading scorers for Rockwell were Riggio with 26 points and Batrick with 10. Pacing Brown Drug were Mejias with 23 points and Whitaker with 14.

It took an overtime for the Independents to outscore Heydlauff's, 57-56. Independents were led by Van Riper with 10 points; Heydlauff's was paced by Riemenschneider with 22 and Balistrere with 21.

An overtime was also needed by Lloyd Bridges to edge Chelsea Lumber, 46-45. Leading scorers for

Bridges were Gary White with 13, well will battle the Independents and Hittingham with 10. Chelsea Lumber was paced by Stoffer with 17 points.

Tonight North American Rock-

## HAMILTON REFRIGERATION & AIR CONDITIONING SERVICE

MANCHESTER

### COMMERCIAL SYSTEMS Installation and Repair

CALL GARY HAMILTON - 428-7600  
NIGHTS 428-8232

# SPECIAL SCHOOL ELECTION

## NOTICE OF SPECIAL ELECTION OF THE QUALIFIED ELECTORS OF

### Chelsea School District

WASHTENAW AND JACKSON COUNTIES, MICHIGAN  
TO BE HELD

**Tuesday, March 26, 1974**

## TO THE QUALIFIED ELECTORS OF SAID SCHOOL DISTRICT:

Please Take Notice that a special election of the qualified electors of Chelsea School District, Washtenaw and Jackson Counties, Michigan, will be held in the Large Group Instruction Room of the Dwight E. Beach School on Tuesday, March 26, 1974.

THE POLLS OF ELECTION WILL OPEN AT 7:00 O'CLOCK, A.M., AND CLOSE AT 8:00 O'CLOCK, P.M.

The following proposition will be submitted to the vote of the electors qualified to vote thereon at said special election.

### TAX RATE LIMITATION INCREASE PROPOSITION FOR OPERATING PURPOSES

Shall the limitation on the amount of taxes which may be assessed against all property in Chelsea School District, Washtenaw and Jackson Counties, Michigan, be increased by 14.78 mills for a period of two (2) years, 1974 and 1975, for the purpose of providing additional funds for operating expenses?

All school electors who are registered with the township clerk or the township in which they reside are eligible to vote at this election.

### COUNTY TREASURER'S STATEMENT

(As required by Act 293, Public Act of Michigan 1947)

I, Hilary E. L. Goddard, County Treasurer of the County of Washtenaw, State of Michigan, do hereby certify that, according to the records of this office, as of February 25, 1974, the total of all voted increases over and above the tax rate limitation established by the constitution of Michigan, in local units of government, affecting the taxable property in Washtenaw County, State of Michigan, in said County, is as follows:

By Washtenaw County	NONE
By Sylvan Township	NONE
By Sharon Township	NONE
By Freedom Township	NONE
By Lima Township	NONE
By Dexter Township	NONE
By Lyndon Township	NONE
By the School District	NONE

HILARY E. L. GODDARD  
Washtenaw County Treasurer

### COUNTY TREASURER'S STATEMENT

I, Merlyn E. Johnson, Treasurer of Jackson County, Michigan, hereby certify that, as of February 25, 1974, the records of this Office indicate that the total of all voted increases over and above the tax rate limitation established by the Constitution of Michigan, in any local units of government affecting the taxable property located in Chelsea School District, Washtenaw and Jackson Counties, Michigan, is as follows:

By Jackson County	NONE
By Grand Lake Township	2 Mills
By Waterloo Township	1 Mill
By the School District	NONE
By Jackson Community College	1.85 Mills
By Jackson Intermediate Special Education	1.50 Mills
By Jackson Intermediate Vocational Tech	2.50 Mills

Merlyn E. Johnson, Treasurer  
Jackson County, Michigan

This Notice is given by order of the Board of Education of Chelsea School District, Washtenaw and Jackson Counties, Michigan.

ROBERT N. SCHAFER

## Henry Block has 17 reasons why you should come to us for income tax help.

Reason 14. We're human, and once in a great while we make a mistake. But if our error means you must pay additional tax, you pay only the tax. We pay any interest or penalty. We stand behind our work.



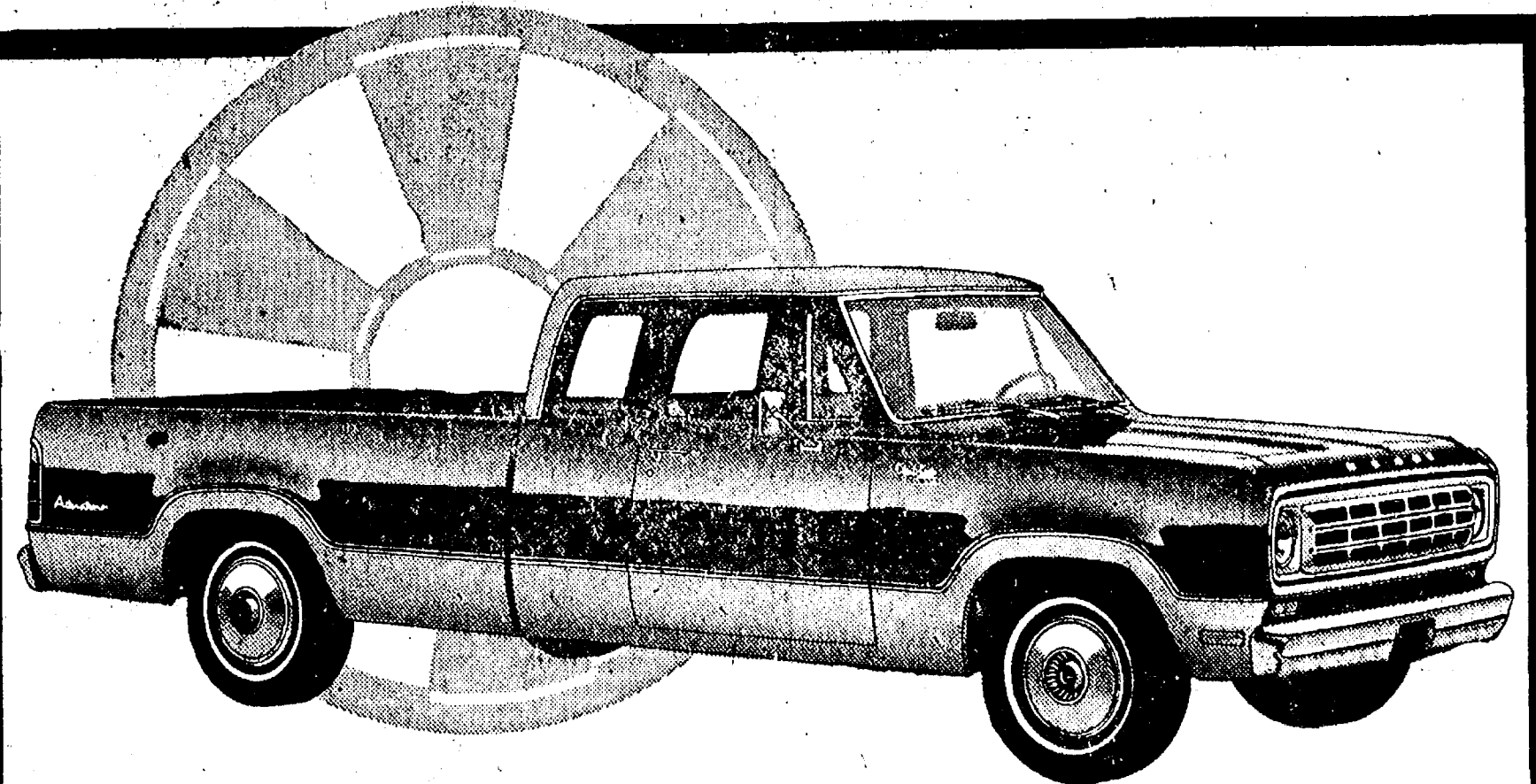
**HENRY BLOCK**

THE INCOME TAX PEOPLE  
NO APPOINTMENT NECESSARY

105 N. Main St., Chelsea Phone 475-2752

Want a pickup truck with more?

# THE DODGE BOYS ARE RIGHT ON TARGET.



## ONLY DODGE GIVES YOU THE EXCLUSIVE CLUB CAB.

The Dodge Boys are still the only people to offer you the Club Cab. A pickup with 34 cubic feet of extra inside storage space. Lots of room for tools, groceries, sports gear... you name it. Why, you can even choose optional jump seats and carry two extra passengers. Come in and see the Club Cab soon. And remember, the Dodge Boys are the only people who have it.

### NOW WITH FOUR-WHEEL DRIVE.

For '74, Dodge made a good thing even better. It added four-wheel-drive models to the Club Cab series—for off-the-road and all-weather traction.

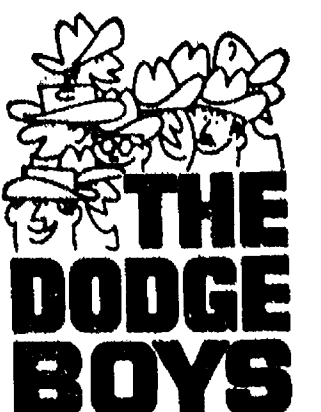
COME IN AND SEE ALL OUR DODGE LIGHT- AND MEDIUM-DUTY TRUCKS.

**VILLAGE MOTOR SALES, INC.**

1185 MANCHESTER ROAD

CHELSEA, MICHIGAN

**Dodge**  
AUTHORIZED DEALERS



Thinking of selling your property? Real estate problems are my business. Let's talk. Call me personally.

**For Myrnel Real Estate Co.**  
OF WASHTENAW

FOR MYRNEL  
Assistant Manager  
EVE. 475-1449

REALTORS  
1196 M-52, Chelsea 475-8693

# NOTICE

## ANNUAL TOWNSHIP MEETING

NOTICE IS HEREBY GIVEN, That the next Annual Township Meeting of the Electors of the

## TOWNSHIP OF LYNDON

County of Washtenaw, State of Michigan

will be held at

## Lyndon Township Hall

(Corner of North Territorial Road and Townhall Road)

Beginning at 1:00 o'clock P.M., Eastern Standard Time

on

**Saturday, March 30, 1974**

At such time in accordance with the law a budget covering proposed expenditures and estimated revenues of the Township shall be submitted for consideration.

Signed: DORIS FUHRMANN  
Township Clerk.

Dated: March 14, 1974.

A Standard Want Ad will get you quick results!





# BOWLING NEWS



## Nite Owl League

Standings as of March 18

	W	L
Dault & Levan	38	3
Steele Heating	39	3
Kirby	44 1/2	4
S. Boy Take-Out	45 1/2	4
Ted's Standard	47	4
Wahl's Oil	50	5
Chelsea Finance	52	5
McCalla Mobile Feed	55	5
Mark 5	57	5
Foster's Men's Wear	52	6
Sherlock Homes	52	6
A-M Corp.	50	6
Cavanaugh Lake No. 1	49	6
Cavanaugh Lake No. 2	48	6
Alber's Orchard	48	6
Slocum's Construction	45 1/2	6 1/2
Heller Electric	44	6 1/2
Pump & Pantry	42	7

200 and over games: G. Packard, 232, 246; J. Eder, 201; C. Young, 224; J. Bergman, 222, 201; L. McKinnon, 205; Roberts, 210; L. Heller, 201.

400 and over series: G. Packard, 643; J. Bergman, 610.

800 and over series: R. Beason, 513; Roberts, 517; T. Steele, 540; J. Elliott, 536; R. Barellis, 527; S. Wilson, 532; L. McKinnon, 504; D. Williams, 517; M. Ford, 510; D. Walton, 502; B. Smith, 507; B. Smith, 500; J. Eder, 587; J. Dault, 503; B. Miller, 515; D. Allen, 520.

## Chelsea Lanes Mixed

Standings as of March 15

	W	L
Bushwhackers	118	78
Fitzsimmons Excavat.	117	79
Chelsea Lanes	113	83
The B's & D's	112	84
Meabon's	109 1/2	79 1/2
Doug's Painting	107	89
Wilson & McDonald	105	91
Marsh & Verwey	104	92
Locitie	103 1/2	92 1/2
Four Roses	101	95
Happ-4	97	99
Ann Arbor Centerless	95 1/2	100 1/2
Hopefuls	93 1/2	102 1/2
Bollinger Sanitation	87	109
G. C. Ranch	82	114
Ann Arbor Eagles	73	123
The Four of Us	73	123
Jarvis & Neuman	66	123

High series: Hopefuls, 2,436.

High game, women: K. Wheeling, 235.

High game, men: E. Vasas, 222.

Women, 150 games and over: W. 169; L. Gilmore, 155; B. Marsh, 159; D. Verwey, 176, 179; D. Cozzens, 171, 160; J. Eastman, 161, 150; L. Alexander, 167; S. Ellenwood, 171; J. Norris, 174, 169, 154; M. Sutter, 168, 157; N. Keezer, 162; L. Jarvis, 177, 155; K. Wheeling, 235, 157; T. Steinaway, 168, 175; R. Crawford, 151, 156; C. Crawford, 189, 166; B. Torrice, 178, 156; A. Rawson, 159, 153.

Men, 175 games: M. Packard, 177; M. Ford, 214, 212; T. Marsh, 180; W. Makowski, 190, 197; D. Speer, 194, 175; J. Trapp, 200; D. Longworth, 175, 187; D. Alexander, 181; T. Wisniewski, 180, 213, 189; S. Hopkins, 182, 214, 211; D. Bolanowski, 183; W. Bolanowski, 189; E. Vasas, 181, 222; J. Norris, 176; L. Keezer, 185; S. Wilson, 203, 218; A. Torrice, 194.

Women, 145 series: J. Stoll, 467; D. Verwey, 479; D. Cozzens, 472; J. Eastman, 431; L. Alexander, 448; J. Norris, 497; M. Sutter, 448; L. Jarvis, 478; K. Wheeling, 620; T. Steinaway, 459; R. Crawford, 444; C. Crawford, 466; B. Torrice, 471; A. Rawson, 428.

Men, 500 series: M. Ford, 588; W. Makowski, 554; D. Speer, 520; J. Trapp, 522; D. Longworth, 507; D. Alexander, 523; T. Wisniewski, 582; S. Hopkins, 607; E. Vasas, 571; L. Keezer, 518; S. Wilson, 556; A. Torrice, 502.

## Hi-Point Mixed League

Standings as of March 12

	Pts.
Alley Runners	632
River Rats	538
Zap	523
Flat Tires	505
Heavy Traffic	479
Faber Fabrics	476
Dexter Gear & Spline	472
4 D's	460
Rowe Plumbing	458
Leutheuser's	456
Ding-A-Lings	444
Hlt & Missers	389

Women, high game, 150 and over: B. Carpenter, 192; M. Paul, 154; G. DeSmither, 162; C. Teachworth, 150; K. Schuman, 154; L. White, 153; P. Scherdt, 181, 153; P. Guenther, 173; M. Morton, 177, 153; D. Dettling, 161, 150; M. Scott, 173, 162; E. Harmon, 161; G. Fox, 153.

Men, high series, 425 and over: M. Scott, 483; E. Harmon, 443; M. Morton, 465; D. Dettling, 436; P. Scherdt, 469; V. Guenther, 439; B. Carpenter, 427; G. De Smither, 443.

Men, high game, 160 and over: K. Garrett, 178; R. Ward, 182; V. Jeffers, 163; F. Steers, 169; W. Beuerle, 166, 192; W. Teachworth, 178; A. Hansen, 182, 204, 206; D. Carpenter, 174, 189; O. Inbody, 180, 201, 191.

## Leisure Time League

Standings as of March 14

	W	L
Four Stooges	70	34
Slowpokes	70	34
Unpredictables	60 1/2	43 1/2
Midlits	59	45
Roadrunners	53	51
Highly Hopefuls	49	55
Rug Rats	45	59
Sugar Loafers	44 1/2	59 1/2
The G's	40 1/2	63 1/2
The Lakers	28 1/2	75 1/2

Games 140 and over: M. O'Donnell, 161, 141; M. Miller, 155, 179, 168; L. Haller, 162, D. Dault, 176, 158; S. Schluppe, 162, 147; J. Stappish, 145; M. Usher, 145, 154, 161; D. Hafner, 153, 145; B. Mull, 149, 179, 177; M. R. Cook, 165; G. Reed, 150, 148; M. McAllister, 167; J. Anderson, 154, 141; C. Engler, 156; J. Delagrange, 171; Sharon Friday, 142; K. Haywood, 150; G. Wheaton, 185, 144; E. Swanson, 143; S. Centella, 159.

200 games: D. McAllister, 219.

400 series: M. O'Donnell, 422; D. Dault, 443; S. Schluppe, 438; M. Usher, 460; D. Hafner, 419; M. R. Cook, 403; G. Reed, 415; J. Anderson, 410; K. Haywood, 412; G. Wheaton, 433.

500 series: M. Miller, 502; B. Mull, 505; D. McAllister, 500.

## Senior House League

Standings as of March 18

	W	L
Mark IV Lounge	116	80
Palmer Motor Sales	111	85
Chelsea Grinding	110 1/2	85 1/2
Ben's Arco	108	88
Seitz's Tavern	102	89
Slyvan Center	106	90
Oddballs	103	93
Schneider's Grocery	100	96
Lloyd Bridges Chev.	96 1/2	94 1/2
Jim's Taxidermy	99	97
Village Motor Sales	99	97
Chelsea Cleaners	96	100
Bauer Builders	90	106
Washtenaw Crop Serv.	90	106
Dexter Automatics	89	107
Linear Corp.	82	114
Chelsea Lumber	81	115
Walt's Barber Shop	80	116

525 and over series: R. McCalla, 532; A. Hayton, 538; J. Harook, 563; G. Weir, 549; M. Poertner, 583; L. Ball, 578; D. Coppennoll, 525; J. Harmon, 582; F. Dickerson, 567; D. Bauer, 541; R. Bauer, 590; T. Bowen, 532; R. Carpenter, 565; J. Krichbaum, 531; W. Griffith, 528; W. Moats, 542.

210 and over games: T. Bowen, 211; R. Bauer, 216; G. Knickerbocker, 217; G. Weir, 221; M. Paertner, 225; L. Ball, 211; A. Hayton, 227.

## Chelsea Suburban

Standings as of March 13

	W	L
Chelsea Drug	112	84
Waterloo Garage	112	84
Dairy Queen	111	85
State Farm	109	87
Foor Mobil	103	93
Pittsfield Plastics	103	93
Klink Excavating	96	100
Chelsea State Bank	94	102
Dana Corp.	88	110
Dancer's	88	111
Frisinger Realty	83	113
Chelsea Lanes	82	114

425 series and over: N. Packard, 508; L. Jarvis, 436; J. Buku, 484; J. Stoll, 459; A. Bohne, 437; L. Bee-man, 497; C. Stoffer, 476; P. Elliott, 471; N. Collins, 473; B. Smith, 449; F. Cole, 470; R. Harrison, 445; K. Snyder, 460; P. Harook, 450; D. Kinsey, 464; G. DeSmither, 493; 164.

## Chelsea Industrial Suburban

Standings as of March 14

	W	L
Double A No. 99	74	34
Local 157	67	41
Rejects	67	41
The Other Team	66 1/2	41 1/2
Harvey's Tavern	58	50
Chelsea Lanes	56	52
Dana PTO's	50 1/2	57 1/2
Passant Ski Boots	49	59
Bob Puncher	46	62
Double A No. 2	44	60
Mark IV Lounge	37	71
Joel Arnold	33	75

High single game: D. Martin, 229.

High Team Game: UAW Local 157, 992.

High single series: D. Martin, 577.

High Team Series: UAW Local 157, 2,557.



BIDDY BASKETBALL PACERS are, front row, from left, Neal Quigg, John Bentley and Larry Lindstrom. In back, from left, are Steve Grau, David Keil, Darrow Keezer, and Leon Durgan. Behind his team is coach Bill Clifton. Not present for photo were Tom Headrick and Duane Branch.



BIDDY BASKETBALL STARS, are front row, from left, Jason Pierson, Kevin Colombo, and Mike Muck. Not present for photo were Rick Darin Rowe, back row, from left, are Tim Dmoch, Cook and Richard Cattell.

## Rolling Pin League

Standings as of March 19

	W	L
Egg Beaters	68	40
Spooners	64	44
Coffee Cups	64	44
Dish Rags	62	46
Kookie Cutters	60 1/2	47 1/2
Brooms	59	49
Grinders	57 1/2	50 1/2
Pots	51	57
Mixers	45 1/2	62 1/2
Kitchen Kapers	42	66
Jolly Mops	39	69
Mopper Uppers	35 1/2	72 1/2

425 and over series: J. Edick, 434; M. Eeles, 435; C. Shepherd, 484; J. Shepherd, 460; D. McAllister, 475; P. Borders, 427.

145 and over games: J. Edick, 146; M. Eeles, 169; E. Williams, 153; C. Shepherd, 181, 158, 145; R. Foster, 177; J. Shepherd, 145, 171; P. Patterson, 146; G. Brier, 157, 164; D. McAllister, 145, 173, 157; G. Weiner, 158; G. Klink, 147; P.

## Old Timers League

Standings as of March 15

	W	L
A. S. C.	70	42
Nelson Realtors	68 1/2	45 1/2
Sportsman's Marathon	65	47
Hotel Inp.	63	49
Milan Service	62	50
Bob & Otto Standard	61	51
Deno's Pin Room	61	51
Cloverleaf Lanes	58	54
Team No. 16	56	56
Conlin Travel	54	58
Stein & Goetz	50 1/2	61 1/2
Sportsman's Tavern	50 1/2	61 1/2
Team No. 14	49	64
Ehins & Son	47 1/2	64 1/2
Colonial Lanes	46 1/2	65 1/2
Merkel Furniture	43 1/2	68 1/2
Team No. 18	40 1/2	71 1/2

High team game and series: Deno's Pin Room, 1,003, 2,549.

High ind. game: W. Butzin, 246, 620.

Other 200 games, 500 series and over: C. Boyd, 240; I. Bright, 237; R. Exelby, 223; R. Raab, 222; B. Elliott, 213; E. Niethammer, 200; N. Wenk, 200; I. Bright, 594; R. Exelby, 593; J. Hinds, 563; P.

Bock, 545; B. Elliott, 539; C. Boyd, 538; E. Holl, 525; R. Raab, 525; N. Wenk, 521; R. McCleery, 517; F. Menerey, 514; E. Niethammer, 513; R. Thayer, 512; M. Ford, 509; R. Carpenter, 507; A. Lionquest, 507; S. Stanifer, 507; W. Tyrakowski, 502; Johnson, 500.

Team won three: Sprentall's Marathon, Hariman Ins., Cloverleaf Lanes and Team No. 14.

CHANGING FOOD SCENE  
Over 5,000 new food items may be introduced in a single year

## PIERSON & SONS

LICENSED GENERAL CONTRACTORS

475-8750

New Construction, Remodeling, Siding.

Have Lunch Today  
at the  
**MARK IV LOUNGE**  
PHONE 475-8141  
1198 M-52 CHELSEA

**FREE**  
8 Steak Knives  
free with lubrication,  
oil and filter change.  
**CHELSEA TOWER SHELL**  
M-52 at I-94, Chelsea

## REAL ESTATE ADVICE

RESIDENTIAL PROPERTIES  
COMMERCIAL - INDUSTRIAL  
FARMS  
VACANT LANDS

## SPEAR & ASSOCIATES, INC.

REALTORS

122 W. Main, Manchester

Ph. 428-8388

MARIA LEHR  
428-8182

**WASTE HUMAN ENERGY**  
(While Having Fun)  
and  
**CONSERVE NATURAL RESOURCES**  
Bowl at  
**CHELSEA LANES**

18 Astrolino Lanes - Billiards & Air Hockey

LOUNGE

**CHELSEA LANES, Inc.**  
PHONE 475-8141



Mean Mary Jean, Superstar of your  
Chrysler-Plymouth Dealer Team, says:  
**D.G. Plue of St. Joseph, Michigan got almost 19 MPG in his Chrysler ...by slowing down.**

Pretty neat ... know what I mean?  
That Mr. Plue, of St. Joseph, Michigan, can get that kind of mileage from his '73 Chrysler Newport with a standard V-8 engine. Here's how he says he does it. By concentrating on getting good mileage on the highway ... and not going over

50 mph ... he was able to get almost 19 miles to a gallon. So by keeping his speed down ... he saves fuel and saves money. He saves his tires, too. Now that's real savings. Know what I mean?

AUTHORIZED DEALER CHRYSLER MOTORS CORPORATION



'74 Chrysler Newport

Newport offers styling, comfort and convenience at a price that's affordable. Also standard on Newport is an electronic ignition that virtually eliminates ignition tune-ups, an engine that runs on regular fuel, and a whole lot more.

GIDAA

**VILLAGE MOTOR SALES, INC.**  
1187 MANCHESTER ROAD  
CHELSEA, MICHIGAN



## + Services in Our Churches +

**FIRST UNITED METHODIST CHURCH**  
The Rev. Clive Dickens, Pastor  
Thursday, March 21—  
12:30 p.m.—Elizabeth Circle, home of Mrs. Max Plank.  
Saturday, March 23—  
10:00 a.m.—Cherub Choir.  
10:30 a.m.—Junior Choir.  
Sunday, March 24—  
9:00 a.m.—Church school, nursery through adult.  
10:00 a.m.—Worship service.  
11:15 a.m.—Youth choir.  
Tuesday, March 26—  
1:00 p.m.—Prayer Study Group, Crippen Building.  
Wednesday, March 27—  
8:15 p.m.—Pot-luck.  
7:00 p.m.—Program.  
8:00 p.m.—Activities.  
Thursday, March 28—  
8:00 p.m.—Administrative Board, Educational Unit.

**FIRST ASSEMBLY OF GOD**  
The Rev. Thode B. Thodeson, Pastor  
Every Sunday—  
9:45 a.m.—Sunday school.  
11:00 a.m.—Worship service.  
6:00 p.m.—Youth Service.  
7:00 p.m.—Evangelistic service.  
Every Wednesday—  
10:00 a.m.—Ladies Bible Study.  
7:00 p.m.—Midweek services.

**CHELSEA MEDICAL CENTER**  
Every Other Wednesday—  
1:30 p.m.—Worship service.

**ST. PAUL UNITED CHURCH OF CHRIST**  
The Rev. John Rinehart, Interim Pastor  
Thursday, March 21—  
1:30 p.m.—Prayer Group.  
Saturday, March 23—  
9:00 a.m.—Confirmation.  
Sunday, March 24—  
9:00 a.m.—Adult Communications Class.  
9:00 a.m.—Church school.  
10:30 a.m.—Worship.  
Wednesday, March 27—  
10:00 a.m.—2:00 p.m.—Girl Scout leaders.  
3:30 p.m.—Junior Choir.  
8:15 p.m.—High School and Chancel Choirs.  
Thursday, March 28—  
1:30 p.m.—Prayer Group.

**FIRST UNITED PRESBYTERIAN CHURCH**  
Unadilla  
The Rev. T. H. Liang  
Every Sunday—  
9:45 a.m.—Sunday school.  
11:00 a.m.—Worship service.

**VILLAGE UNITED METHODIST CHURCH OF WATERLOO**  
8118 Washington St.  
The Rev. Altha Barnes, Pastor  
Every Sunday—  
10:00 a.m.—Sunday school.  
**CHELSEA BAPTIST CHURCH**  
337 Wilkison  
The Rev. James Stacey, Pastor  
Every Sunday—  
9:45 a.m.—Sunday school.  
11:00 a.m.—Worship service.  
Nursery care available during all services.  
8:00 p.m.—Junior and Senior Baptist Youth Fellowship.  
7:00 p.m.—Evening service.  
Every Wednesday—  
7:00 p.m.—Bible study and prayer meeting.

**ST. JOHN'S (UNITED CHURCH OF CHRIST)**  
Rogers Corners  
The Rev. Richard Campbell, Pastor  
Every Sunday—  
9:30 a.m.—Sunday school.  
10:30 a.m.—Worship service.

**ST. MARY CATHOLIC CHURCH**  
The Rev. Fr. David Philip Dupuis, Pastor  
Mass Schedule  
Every Saturday—  
4:00-5:00 p.m.—Confessions.  
7:00 p.m.—Mass.  
Immediately after 7 p.m. Mass—Confession.  
Every Sunday—  
Winter schedule  
8:00, 10:00, 12:00 noon.—Mass.  
Summer schedule  
7:00, 9:00, 11:00 a.m.—Mass.

**FIRST CHURCH OF CHRIST, SCIENTIST**  
1883 Washtenaw Ave., Ann Arbor  
Every Sunday—  
10:30 a.m.—Sunday school; morning service.

**PIERSON & SONS**  
LICENSED GENERAL CONTRACTORS  
475-8750  
New Construction, Remodeling, Siding.

**CONGREGATIONAL CHURCH (United Church of Christ)**  
The Rev. Carl Schwarm, Pastor  
Saturday, March 23—  
9:00 a.m.—Confirmation Sunday practice.  
Sunday, March 24—  
10:00 a.m.—Sunday school.  
11:00 a.m.—Worship service.  
Confirmation Sunday. One Great Hour of Sharing.  
Monday, March 25—  
7:30 p.m.—Choir.  
Wednesday, March 27—  
7:30 p.m.—Lenten service.

**ST. THOMAS EVANGELICAL LUTHERAN**  
Ellsworth and Haab Rds.  
The Rev. Daniel L. Mattson, Pastor  
Thursday, March 21—  
8:00 p.m.—Men's Bible Study.  
Sunday, March 24—  
9:45 a.m.—Sunday school and Bible class.  
11:00 a.m.—Worship service.  
Monday, March 25—  
7:00 p.m.—Sunday school teachers.  
Wednesday, March 27—  
8:00 p.m.—Lenten service at St. John's.

**ZION LUTHERAN CHURCH**  
Corner of Fletcher, Waters Rds. (Rogers Corners)  
The Rev. John R. Morris, Pastor  
Thursday, March 21—  
4:00 p.m.—Eighth grade youth instruction.  
Saturday, March 23—  
9:00 a.m.—Ninth grade youth instruction.  
10:00 a.m.—Seventh grade youth instruction.  
Sunday, March 24—  
9:00 a.m.—Sunday school.  
10:15 a.m.—Worship.  
Monday, March 25—  
7:30 p.m.—Sunday school staff.  
Wednesday, March 27—  
6:30 p.m.—Junior Choir, Senior Choir following.  
7:30 p.m.—Fifth Lenten devotion.  
Thursday, March 28—  
4:00 p.m.—Eighth grade youth instruction.

**ST. JOHN'S EVANGELICAL AND REFORMED CHURCH (United Church of Christ)**  
Francisco  
The Rev. J. P. Goebel, Pastor  
Every Sunday—  
9:30 a.m.—Sunday school until 10:30 a.m. Confirmation classes, seventh graders and up. Children's Choir Practice. Adult Bible Study.  
10:30 a.m.—Worship service until 11:30 a.m. Nursery available for pre-schoolers during worship service.

**CHURCH OF CHRIST**  
13861 Old US-12, East  
David A. Rushlow  
Every Sunday—  
10:00 a.m.—Church school.  
11:00 a.m.—Worship service.  
Nursery will be available.  
6:00 p.m.—Worship service.  
Every Wednesday—  
7:30 p.m.—Bible Study.

**ST. BARNABAS EPISCOPAL CHURCH**  
20550 Old US-12  
The Rev. C. Walton Fitch, Vicar  
Telephone 426-8815  
Every Sunday—  
9:15 a.m.—Holy communion, first, third, and fifth Sundays.  
9:15 a.m.—Morning Prayer, second and fourth Sundays.  
9:30 a.m.—Sunday school.  
10:15 a.m.—Choir rehearsal.

**IMMANUEL BIBLE CHURCH**  
145 E. Summit St.  
The Rev. LeRoy Johnson, Pastor  
Every Sunday—  
9:45 a.m.—Sunday school, nursery provided.  
11:00 a.m.—Morning worship, nursery provided.  
7:30 p.m.—Family hour, prayer meeting and Bible study.  
First Sunday of Month—  
7:00 p.m.—Communion service.  
10:00 a.m.—Sunday school.

**NORTH SHARON BIBLE CHURCH**  
Sylvan and Washburne Rds.  
The Rev. William Enslen, Pastor  
Every Sunday—  
10:00 a.m.—Sunday school.  
Nursery will be available.) Junior church classes.  
11:00 a.m.—Worship service.  
6:00 p.m.—Senior High Youth meeting. Youth Choir.  
7:00 p.m.—Evening worship service. (Nursery available.)  
Every Wednesday—  
7:00 p.m.—Bible study and prayer meeting. (Nursery available.)  
Bus transportation available: 428-1222.

**METHODIST HOME CHAPEL**  
The Rev. R. L. Clemans, Pastor  
Every Sunday—  
8:45 a.m.—Worship service.

**OUR SAVIOR LUTHERAN CHURCH**  
The Rev. William H. Keller, Pastor  
1515 S. Main, Chelsea  
Each Sunday—  
9:00 a.m.—Sunday school.  
9:00 a.m.—Adult Bible class.  
10:30 a.m.—Worship service.

**GREGORY BAPTIST CHURCH**  
The Rev. Grant Lapham, Pastor  
Every Sunday—  
10:00 a.m.—Worship.  
10:00 a.m.—Sunday school.  
7:30 p.m.—Evening worship service.

**WATERLOO FIRST UNITED METHODIST**  
Parks and Territorial Rds.  
The Rev. Altha Barnes, Pastor  
Every Sunday—  
9:15 a.m.—Morning worship.

**BAHA'I FIRESIDE**  
Every Thursday—  
8:00 p.m.—At the home of Toby Peterson, 705 S. Main St. Anyone wishing to learn about the Baha'i faith is welcome.

**NORTH LAKE UNITED METHODIST CHURCH**  
The Rev. J. William Todd, Pastor  
Every Sunday—  
9:45 a.m.—Worship service.  
11:00 a.m.—Sunday school. Nursery available.  
Every Wednesday—  
4:00 p.m.—Children's Choir.  
7:00 p.m.—Adult Choir.

**ST. JACOB EVANGELICAL LUTHERAN CHURCH**  
12501 Rietmiller Rd., Grass Lake  
The Rev. Andrew Bloom, Pastor  
Every Sunday—  
9:00 a.m.—Worship service.  
10:15 a.m.—Divine services.

**SALEM GROVE UNITED METHODIST CHURCH**  
3320 Notten Rd.  
The Rev. J. William Todd, Pastor  
Every Sunday—  
10:00 a.m.—Sunday school.  
11:00 a.m.—Worship service.

**BETHEL EVANGELICAL AND REFORMED CHURCH (United Church of Christ)**  
Freedom Township  
The Rev. Roman A. Reineck  
Every Sunday—  
10:00 a.m.—Worship.

**Guest Speaker Slated Sunday at Assembly of God**  
Orville Johnson of Livonia will be the guest speaker at the First Assembly of God, 14900 Old US-12 E. this Sunday, March 24, according to the pastor, the Rev. T. B. Thodeson.

Johnson served as interim pastor for several months prior to the Rev. Thodeson's coming as pastor of the church.

The deepest oil well in the United States—more than 30,000 feet—was drilled in Oklahoma in 1972. It was a dry hole.

## Local Riders Claim Awards at Hunter-Jumper School Show

Local riders from Stoney Ridge Farm accounted for one champion ship, one reserve championship, and a large number of ribbons in Union Lake.

## Immanuel Church Film Showing Set for Saturday

A film that has been called "the outstanding Christian film of the year," will be shown Saturday night, March 23, at 7:30 p.m. at Immanuel Bible church, 145 E. Summit St.

"A Thief in the Night" is the story of the end times, of Christ's coming as "a thief in the night," and the early days of the tribulation.

## Sharon Church Attendance High Victory Sunday

Every previous record in every department was broken on Victory Sunday, March 17 at North Sharon Bible church.

The church surpassed their goal of 490 and their previous record of 550 with a total of 576 in church. The Sunday school attendance was a record 445. The church's five red buses brought a record 280 people.

Lives were touched—13 people publicly recorded their decision to receive Christ as Savior and begin living for God.

The Manchester bus won the bus award with a record 68 Manchesterites riding. Tom Harris is driver, Gale and Joyce Harris captains.

The 4-6th grades won the Junior church award with a record 92 youngsters. Dick and Jean Rudd instruct the group assisted by Joe Girard.

The 5-6th grade girls won the Sunday school award with a record 50 girls. Lorella Rousler is their teacher, assisted by Marilyn Davidson.

"There are a lot of people in this place," Lorella said, "but there is a lot of love, too."

## Letters to the Editor

To the Editor: Anyone who does not know what his next year's property taxes are going to be had better do some quick checking. Those of many of us have almost doubled due to the increased valuation.

To add injury to insult, the Chelsea School Board now proposes a "net" 3.3 mills millage increase for operating expenses, of which 80 percent goes for salaries. This, however, will only be 3.3 mills for those who had no increase in valuation. For many of us it will be closer to 6 or 7 mills and system-wide over 4 mills.

It is hard to understand why we need a 40 percent increase in operating expenses.

Also soon to come is the increase to pay for the building program that some so rashly approved, complete with its million dollar swimming pool.

I appreciate the necessity to cover increased expenses, but the amount requested seems to be much more than adequate.

Sincerely,  
Jim Poulter.



**Faster gains from better FEEDS**

Calves get growing and gaining faster, on our balanced, fortified Calf Feed... enriched with needed vitamins, minerals.

Complete feeding rations for all your livestock, poultry.

**FARMERS' SUPPLY CO.**  
PHONE 475-1777

## NOTICE

### ANNUAL TOWNSHIP MEETING

NOTICE IS HEREBY GIVEN, That the next Annual Township Meeting of the Electors of the

## TOWNSHIP OF SYLVAN

County of Washtenaw, State of Michigan

will be held at

## Sylvan Township Hall

Beginning at 1:00 o'clock P.M., Eastern Standard Time on

## Saturday, March 30, 1974

At such time in addition to other regular business and in accordance with the law, a budget covering proposed expenditures and estimated revenues of the Township shall be submitted for consideration.

Signed: **DANIEL MURPHY**  
Township Clerk.

Dated: March 14, 1974.

Want to sell a car? Try a Standard Want Ad!

### LOSE UGLY FAT OR PAY NOTHING

Start losing weight today OR MONEY BACK. MONADEX is a tiny tablet that will help curb your desire for excess food. Eat less-weight less. Contains no dangerous drugs and will not make you nervous. No strenuous exercise. Change your life... start today. MONADEX costs \$3.00 for a 20 day supply and \$5.00 for twice the amount. Lose ugly fat or your money will be refunded with no questions asked by:

**CHELSEA DRUG STORE**  
Chelsea - Mail Orders Filled

**DEXTER LOCKER**  
DUNBAR MEATS

1431 E. MICHIGAN  
YPSILANTI  
483-7466

## MEATS THAT ARE GOOD

### FILL YOUR FREEZER NOW

## WE HAVE SIDES - HINDS - FRONT

## CUSTOM SLAUGHTERING & PROCESSING

## Save on fuel costs... modernize your heating system NOW!

### IS YOUR FURNACE MORE THAN 10 YEARS OLD?

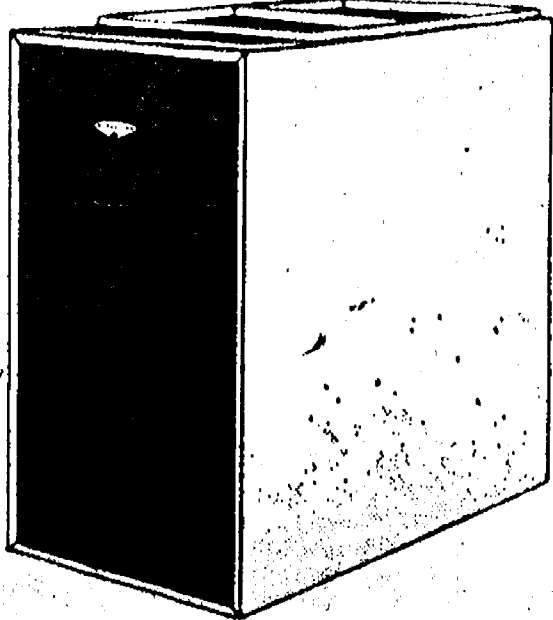
Has it lost its efficiency? Is it too young to smoke but does? Research shows us that modern heat engineering saves real money in better combustion, and more efficient use of heat.

Your old-fashioned, worn out furnace may be costing you needless dollars every year. Call us—let us show you what modern science has given home-owners—the International 20-year warranty, the heavier gauge metals, the exclusive fuel-burning features—resulting in the most comfortable, draft-free automatic heat ever!

## FREE HEATING SURVEY

Let us analyze your present system and suggest repairs or cost-saving ideas. No charge of course, for our 14-point check-up.

**INTERNATIONAL**



**CHELSEA HEATING CO.**  
475-2419

## \*Helen Jones has a NEW KITCHEN

Helen Jones has a new kitchen. New cabinets, stove, refrigerator, stainless steel sink, disposal, dishwasher, wallpaper, carpeting. Ann Arbor Federal Savings provided the Home Improvement Loan and Helen is paying just \$78.75 per month. Ann Arbor Federal Savings will, in fact, provide the funds for any worthwhile improvement. You too can have a new garage, bathroom, family room, heating system, decorating, remodeling, wiring... you name it. Ann Arbor Federal Savings will talk to you about it. You can borrow up to \$5000. Take up to five years to repay. Your home need not be paid for, and you don't need a down payment. Now is an especially good time to home improve because Home Improvement Loan rates at Ann Arbor Federal Savings have dropped.

\*APPROX. COST \$78.75/MONTH FOR 60 MONTHS  
Based on an estimate of \$3,500.00 for carpeting, new cabinets, double stainless steel sink, disposal, range, refrigerator and dishwasher. Total payments equal \$4,725.00 (annual percentage rate 12.50%).

**ANN ARBOR FEDERAL SAVINGS**

ANN ARBOR OFFICES: Downtown, Liberty at Division; Westside, Pauline at Stadium; Eastside, Huron Parkway at Platt; Northside, Plymouth at Nixon. CHELSEA—Main Street near Old US-12. DEXTER—8081 Main Street. YPSILANTI—Hewitt at Packard.  
Member: Federal Home Loan Bank System • Federal Savings and Loan Insurance Corporation



## Herbert Schenks Honored on 50th Anniversary

Mr. and Mrs. Herbert E. Schenks of Waters Rd., Ann Arbor, were honored at a reception celebrating their 50th wedding anniversary on Saturday, Feb. 23, at Freedom Township Hall.

The couple were married Feb. 23, 1924 in Freedom township, and have lived in the Ann Arbor area all of their married life.

The reception was hosted by the Schenks children, Mr. and Mrs. Albert Schenks and Mr. and Mrs. Roy Bradley, and their grandchildren.

## John Myerses To Observe 68th Anniversary

Mr. and Mrs. John E. Myers, of 412 Wilkinson St., will celebrate their 68th wedding anniversary on March 23.

The couple, married in Lake Ann, O., have nine children, Lenora Szalay of Ann Arbor, George Meyers of Meebish Island, Stewart Myers of Chelsea, Jay Myers of Livonia, Earl Myers of Clinton, Jessie Welch of Harbor Springs, Clifford Myers of Chelsea, Melba French of Chelsea, and David Myers of Grass Lake.

They also have 28 grandchildren and 59 great-grandchildren. Both are retired from Federal Screw Works.

## Farm Bureau Women Plan Arts, Crafts, Baking Exhibition

Washtenaw county Farm Bureau Women will feature an arts, crafts, and baking exhibit for their regular March meeting to be held at the Pittsfield Grange Hall on Saline-Ann Arbor Rd., on Thursday, March 28.

Women will meet in the morning to make tray favors for Mott Children's Hospital and enjoy a pot-luck luncheon at noon.

At the afternoon meeting Miss Dorothy Downer, from the Detroit Edison Co., will speak to the group.

The women will be bringing in their items on March 28 between 9 a.m. and 10:30 a.m. The following categories will be featured: needlecraft, needlework, craft projects, and baking. No sewing entries are to be made.

## Boy Scouts...

### TROOP 420-

Boy Scout Troop 420 met Monday at the American Legion Hall. The troop had inspection and continued working on advancement projects. Frank Kornel appeared before a court of review for his first class award and was passed.

A troop court of honor will be held at the American Legion hall on Sunday, March 31 at 2 p.m. All troop members are expected to advance one rank. Boys will be accompanied by their parents. A light snack will be served after the ceremonies.

Peter Beaudoin, scribe.



**SALYER-FIELDER:** Mr. and Mrs. Marvin E. Salyer of Trinkle Rd. announce the engagement of their daughter, Denise, to Mark P. Fielder of Dallas, Tex., the son of Mrs. Mary R. Fielder of Dallas and the late Joseph J. Fielder. The prospective bride is a graduate of Chelsea High school and attended the University of Kentucky in Lexington. She is presently enrolled in the Washtenaw Community College dental assistant program and is employed as an orthodontic assistant. The prospective bridegroom is a graduate of Justin E. Kimball High school of Dallas and is a 1973 graduate of Texas Wesleyan College of Fort Worth, Tex. A summer wedding is planned.

## Rebekah Lodge

Chelsea Rebekah Lodge will be furnishing the entertainment for the District 12 meeting, to be held in Brooklyn on April 3, with Mrs. Nina Lehmann, noble grand, and secretary Eulalie Packard as representatives from Chelsea Lodge.

District 10 will be held at Dexter on April 1, for an afternoon and evening meeting. All members are invited to attend this meeting.

It was voted to send \$20 to the IOOF and Rebekah Home in Jackson, for a special treat for the residents.

A birthday card shower is to be held March 24 for Mrs. Gladys Breitenwischer, who will be at her son's home address, 1902 Anville, Houston, Tex. 77000. A complete address and birthday list for each member was compiled and given to those in attendance.

Kathryn Sebestyne was nominated to be the name in the drawing for a week at Big Star Lake Camp.

Rummage sale committee was appointed, with Mrs. Ida Nixon and Mrs. Dorothy Keezer as co-chairmen. The date was set as April 19 and 20.

A special session of all branches of the Order will be held in Jackson Western High school on April 4 at 7 p.m. Sovereign grand master, Shelby McCauley and staff will be there. All members are urged to attend with pencil and paper.

Mrs. Carrie Dunlap and Helen Sibley were the evening's committee. Mrs. Helen French has returned to Chelsea and welcomes visitors.

Mrs. Olla Voelm is recuperating at home, and can have visitors now. Get-well cards should be sent to Mrs. Mabel Neal in room 334, Private 8, University Hospital, Ann Arbor. Both are Rebekah members.

A cleaning bee will be held at the hall, Mrs. Lehmann calling the date and time.

Next regular meeting will be April 2 at 7:30 p.m.

The new order of knives have arrived, with Lucille Altstaetter as chairman. Mrs. Hochrein has the dish cloth orders at her home. Members are asked to save all empty aerosol can covers and bring to the next meeting, to be used in making table favors.

## Music Festival...

(Continued from page one)

band performed very well in both sight reading and performance.

Both bands, he noted, played in a higher classification of music than did last year's 7th and 8th grade bands, since Beach Middle school was classified a Class C school last year, but is classified Class B this year.

## Club and Social Activities

### KINDER KLUB

March meeting of the Kinder Klub was held Tuesday, March 12, at the home of Mrs. Carol Hoffman, with Mrs. Clara Ewald and Mrs. Veretta Whitaker as co-hostesses. Guests for the evening were Mrs. Sharon Roberts and Mrs. Sue Middlebrook.

The club has decided to go to spring planning on April 27 at Greenville.

A committee was chosen to select a slate of officers for next meeting.

The group's April meeting will be a fun night at the home of Mrs. Laura Downer.

Sharon Roberts gave a cake-decorating demonstration after which all the members tried their hands at decorating.

### CHILD STUDY CLUB

Chelsea Child Study Club met at the home of Mrs. Robert Merkel on March 12 after touring the University of Michigan Botanical Gardens. Mrs. Bill Smith attended as a guest.

Members decided to donate the proceeds from the book sale to McKune Memorial Library for the purchase of books.

The nominating committee announced the slate of officers to be voted upon at the next meeting, which will be at the home of Mrs. Frederick Weber. Program for the evening will be "Childhood Diseases."

Refreshments were served by Mrs. Robert Meyers and Mrs. Art Steinaway.

### PAST NOBLE GRANDS

The Past Noble Grand's Club met for a festive St. Patrick's Day meeting Tuesday at the home of Mrs. Dorothy Keezer, with Mrs. Loydelle Keezer as co-hostess.

The 11 members and one guest, Mrs. Edith White, were served a dessert lunch in keeping with the St. Patrick's Day decoration.

The door prize was won by Mrs. Homer Nixon, and was a shamrock plant.

Discussion concerning the group's project for Ypsilanti State Hospital followed. The group will be assigned an area in this type of work.

The April meeting will be at the home of Mrs. George Pickell on Tuesday, April 23, with Mrs. Helen Harris as co-hostess.



Week of March 25-29

Monday - Hamburgers on buns with trimmings, buttered carrots, potato sticks, fruit cocktail, and milk.

Tuesday - Spaghetti with cheese, green salad, French bread and butter, ginger bread with topping, and milk.

Wednesday - Toasted cheese sandwich, cream of tomato soup with crackers, celery strips, tarts and milk.

Thursday - Hot dogs on buns with trimmings, tatar tots with catsup, pickled beets, Indian peach pudding, and milk.

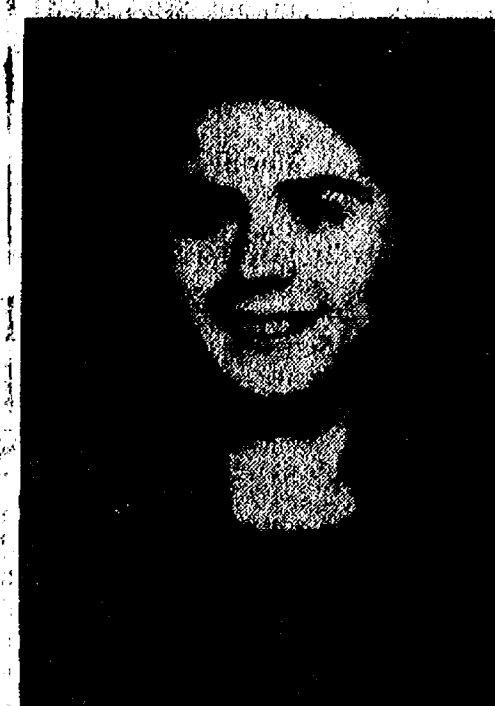
Friday - Submarine sandwiches with sauce, potato chips, buttered green beans, harvest pudding, oatmeal cookie, and milk.

Mrs. Pat Russel had a brunch party March 14. Guests were Mrs. Mary Heard and son, Mrs. Sharon Hoffman and daughter, Mrs. Mary Hadley, Mrs. Barbara Roderick, Mrs. Betty Hayden, Mrs. Mary Ann Meyers, Mrs. Marilyn Lewis, Mrs. Jodi Platt, Mrs. Shirley Lancaster, and Mrs. Mary Clark.

## Magic Mirror Beauty Salon

Open Tuesday thru Friday  
9 a.m. to 9 p.m.  
Saturday, 8 a.m. to 3 p.m.

PHONE 665-0816



**JENNEL CAUDILL**, a 1973 graduate of Chelsea High school, has been named to the Dean's List at Hyles-Anderson Bible College in Hammond, Ind. She is the daughter of Mr. and Mrs. Steve Caudill.



**BROWNIE TROOP 169-**  
Brownie Troop 169 planned to go bowling Saturday night at Chelsea Lanes. We talked about all the fun we had at the father-daughter banquet last Monday. Mrs. McLaughlin came and taught us how to make Easter bunnies. Anna Marie Aello, scribe.

**TROOP 442-**  
Today, Troop 442 finished work on our badges. Then we played games. We should start giving out the Girl Scout cookie boxes on Friday.  
Kim Harvey, scribe.

**BROWNIE TROOP 145-**  
On March 14, Brownie Troop 145 went to Laurie Heller's farm to watch them shear sheep. Each of us got to bring some wool home. We also went into the dairy barn to see a day-old calf and the milking equipment. They have a shetland pony, too.  
Joyce Robards, scribe.

**TROOP 689-**  
Thursday, Troop 689 had another first aid lesson. We handed in our old books and got new ones. We learned how to bandage a cut and how to splint an arm. Shelly Underdahl brought treats.  
Sabrina Woodward, scribe.

Women who are heavy smokers risk having low-birth-weight babies, according to the March of Dimes.

## Project SSI Alert Plans Series of Local Meetings

Project SSI Alert is conducting training sessions for volunteers to continue the county-wide drive to inform citizens over 65 years of age of the new federal program called Supplemental Security Income, according to Norman Wenk, Chelsea area chairman. SSI payments can help people over 65 or those who are disabled or blind, who have less than \$180 per month income and less than \$1,500 in savings or other resources (not counting a home and car). For couples the figures would be \$280 per month income and \$2,250 in resources. And if people are still working after they reach 65 years of age the figure for income goes up.

At the training sessions, SSI Alert director, Gay Cox, announced plans for group meetings for people over 65 years of age in all areas around the county. Invitations to potential applicants will be issued so that anyone who attends a meeting in his or her local area will be able to apply for SSI if they are eligible. This will avoid the necessity of trips to the Social Security office in Ann Arbor and will use SSI Alert volunteers as helpers to both the Social Security staff and to the people who need help in filling out applications. Wenk added that Social Security staff will determine eligibility in all cases.

Any senior citizen group that wants to arrange a meeting for its members should call Mrs. Cox at the Project SSI Alert office, at the Red Cross headquarters in Ann Arbor, phone 971-6085. The office will also be glad to receive information about potential SSI applicants.

## Possible Millionaire...

(Continued from page one)

Those semi-finalists, however, will progress in Tuesday's drawing to prizes that range from a low of \$5,000 to the amazing million dollar dream.

Walker, who has "an almost six-year-old" son, lives at 341 Elm St. Whatever he wins will go toward a house for him and his son, and "you can bet that if I win real big that's where it's going."

**VIVIANE WOODARD  
COSMETICS  
475-8785  
Dorothy Orthbrink, Director**

## Personal Notes

Mrs. Shirley Lancaster and daughter, Margaret, had a surprise birthday party March 12 for Mrs. Mary Clark. Lunch was served to guests, Mrs. Barbara Roderick, Mrs. Marilyn Lewis, Mrs. Theresa Bott, Mrs. Tim Ryan and daughter, Mrs. Marge Coburn, Mrs. Dee Coburn, Mrs. Caroline Brightwell, and Mrs. Betty Hopkins.

Henry Kiel of 533 N. Main, underwent heart surgery for installation of a Pacemaker Tuesday afternoon while visiting at Granite City, Ill. He is at St. Elizabeth Hospital in Granite City. He is the father of Mrs. Ralph Erskine.

## LAURA'S BEAUTY SALON

LAURA DOWNER, Owner - Formerly Tina's Beauty Salon  
116 S. MAIN ST. PHONE 475-7677

LAURA - TINA - MADELINE - ANGIE

OPEN MONDAY THRU SATURDAY

9 a.m. to 5 p.m.

EVENINGS BY APPOINTMENT

**Come In!  
You're Invited!  
meet and chat with  
Marsha Starr**



She will show you how easy  
it is to make beautiful

## UKRANIAN EGGS

Exclusive Appearance at Our Shop Only!

11:00 a.m. to 4:00 p.m.

**SATURDAY, MARCH 23**

COMPLETE KIT \$3.00 (Colors 100 eggs)

Other supplies available.



## Tailfeather Creations

103 M. MAIN  
CHELSEA  
Phone 475-2512

## VILLAGE BEAUTY SALON

101 N. MAIN PHONE 475-1671

LORETTA

CHEYL - JANICE - CAROL - ARLENE - JANIE

OPEN TUESDAY THRU SATURDAY

Tuesday and Thursday Evenings

## THINK ABOUT IT

## Jet Spray Carpet Cleaning

Phone John Lixey 761-3025 or 475-1509

YOUR  
BANKAMERICARD  
ACCEPTED



## SWING INTO SPRING

**Come see our beautiful  
new Spring Designs!**

Brighten up your home for Spring with our green plants, blooming plants, fresh flowers, everlasting dried and silk arrangements. We're tops in design.

We have a nice selection of

- ★ SPRING POTTERY
- ★ TERRARIUMS
- ★ HANGING POTS, BASKETS

We also have a large selection of  
Spring Candle Rings,  
Shamrocks for St. Patrick's Day.

Have you visited the Green Thumb in our upper levels?  
Browsers are always welcome at

**GAR-NETT'S  
FLOWER & GIFT SHOP**  
1771 MIDDLEBURY PH 475-1466

## Clearance Sale

Ladies Skirts, Slacks, Sweaters

Girls' Dresses, Slacks, Sweaters

Boys' Straight-Leg Pants

**1/2 OFF**

Ladies Casual Blouses, Shells

and Bermudas

**20% OFF**

**VOGEL'S STORE**

## RICK'S MARKET

The Little Store That Wants To Do Big Things!

20490 M-52 North

PHONE 475-2898

**COKE**

12 Pak \$1.69  
12-Oz. Cans

ECKRICH

**SMORGAS-PAC**

1-Lb. \$1.29  
Pkg.

BORDEN'S HOMO

**WHOLE MILK**

gal. \$1.29

SPARTAN

**BREAD**

2 Jumbo 89¢  
1 1/2-Lb. Loaves

**DR. PEPPER**

6 Pak 85¢  
12-Oz. Cans

**OREO COOKIES**

19-Oz. 65¢  
Pkg.

OVEN FRESH

**NUTTY DONUTS**

Pkg. 49¢  
of 12

**BOWLENE**

34-Oz. 45¢

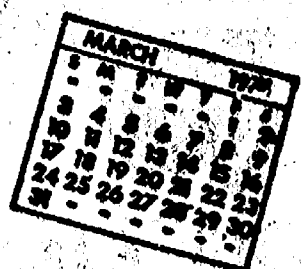
**Fresh Donuts & Delicious Bar-B-Q Ribs & Chicken Daily**

**FRESH BAKED BREAD ON WEEK-ENDS!**

Our Specials Are Good for the Whole Week - Thurs., Mar. 21 to Wed., Mar. 27  
NOT JUST 4 DAYS!



## Community Calendar



Cavanaugh Lake-North Sylvan Grange, Tuesday, April 2, 12:30 p.m., home of Mr. and Mrs. Walter Wolfgang, 13031 Scio Church Rd., for pot-luck dinner. Bring own table service and dish to pass.

Chelsea Citizen's Band Emergency Service, informal meeting, Wednesday, March 27, 7 p.m., Chelsea High school cafeteria. Program: Rick Rogell, meteorologist with the U.S. Weather Service will present a film and slides on tornadoes and severe weather, the Severe Weather Warning System, and communications and emergency measures. All interested in civilian radio communications, CB and Ham, and local emergency measures are invited to attend.

Mill Creek Research Council, 9th annual meeting, Tuesday, March 26, 8 p.m., at Lima Township Hall. Everyone living both in the proposed park area and in the neighboring areas is urged to attend.

Ostomy Club of Washtenaw County, Thursday, March 21, at 7:30 p.m. at the Senior Citizens Guild, 502 W. Huron St., Ann Arbor. Program: "The Volunteer Visits the Patient." Guests are welcome.

Huron Valley Girl Scout council, Wednesday, March 27, 9:30 a.m. to 2 p.m., St. Paul's United Church of Christ, 14000 Old US-12. For all registered adults. Make reservations for lunch or bring sack lunch. Babysitting provided. Topics for discussion: Community Level Summer Program, Wilder Opportunities, First Grade Brownies and Implement Girl Scout Planning.

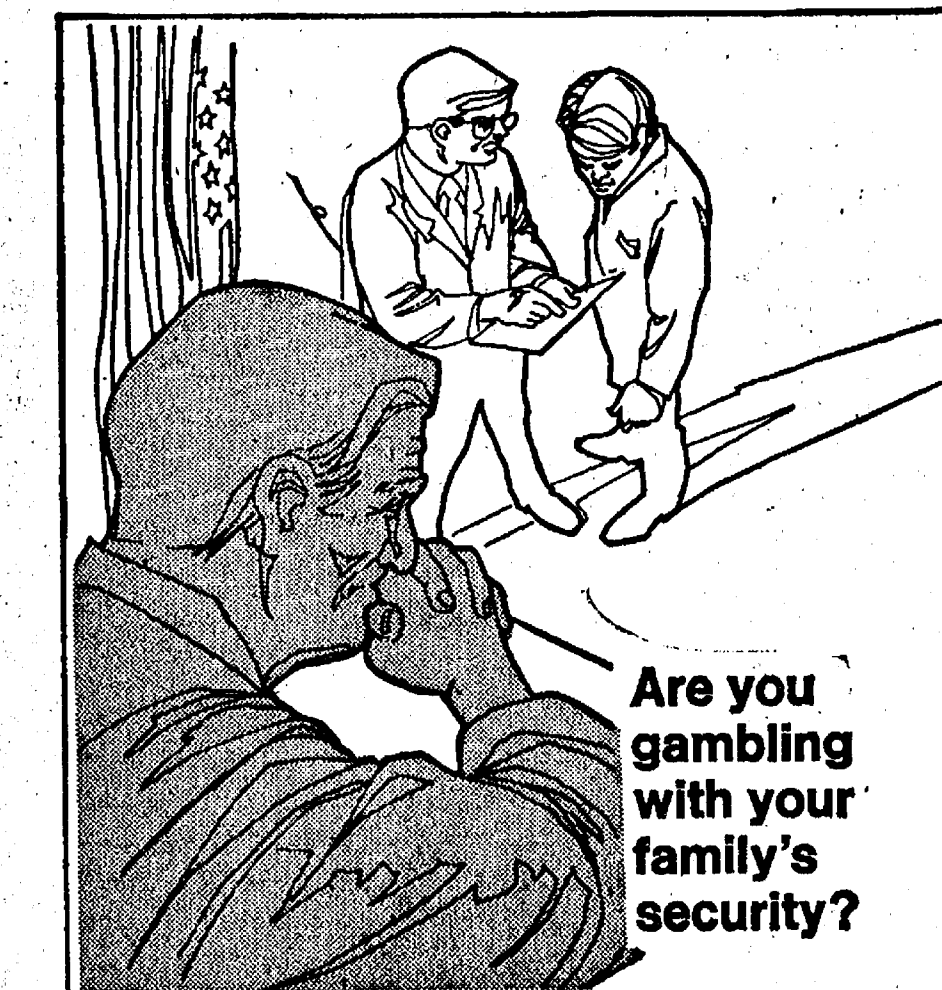
Modern Mothers Child Study Club, Tuesday, March 26, 8 p.m., at home of Pauline Porath. Program: "Gateways to Family Expansion."

Due to fire, the American Legion hospital equipment records were destroyed. Anyone having equipment is kindly asked to call Pat Merkel at 475-1824.

One hot meal a day delivered to the home of elderly or disabled, seven days a week, to people living in the Chelsea area. For information call 475-8014 or 475-2923.

Washtenaw County Stroke Club, sponsored by the Michigan Heart Association and the Ann Arbor Recreation Department, will meet March 23, at the Burns Park Center, 3 p.m.

Spring salad luncheon, Congregational church, March 27, 11 a.m. to 1:30 p.m., mens dining room serving salads and hot dishes. Contact Mrs. Howard Kern, 475-8730 for tickets, \$2. Bake sale in Fellowship Room.



Are you gambling with your family's security?

Suppose you were sued for \$500,000... and lost! Would you be able to stay out of bankruptcy? And what would happen to your family security? Suits involving hundreds of thousands of dollars are all too frequently started against businessmen and professionals simply because they are well-known as affluent and successful people! Here's an economical way to avoid such a risk! Our Executive Liability Insurance provides up to \$5,000,000 of protection for you and your family. Call us now. We can probably put all your liability insurance together and even save you some money.

it's better **altogether**

**A. D. MAYER AGENCY, INC.**

115 PARK ST., CHELSEA  
BOB BARLOW, AGENT  
PHONE 475-2030

**Auto-Owners Insurance**  
Life Home Car Business

## DEATHS

### Edward R. Beeman Dies Tuesday from Injuries Received in Auto Crash

Edward R. Beeman, 15775 Cassidy Rd., Grass Lake, died Tuesday, March 19, at St. Joseph Mercy Hospital as a result of injuries received in an automobile accident Saturday. He was 20 years old.

Born Oct. 1, 1953, in Jackson, he was the son of George and Lavon Winkle Beeman. He was employed by the John Klink Excavating Co. as a heavy equipment operator.

Surviving are his parents; four sisters, Mrs. George (Rosemary) Klink of Munith, Linda and Georgia, of Chelsea, and Doris, at home; one niece, Rochelle Beeman; and grandparents, Mr. and Mrs. Leigh Beeman of Waterloo.

Funeral services will be conducted Saturday, March 23, at 1:30 p.m. at the Burghardt Funeral Home by the Rev. Altha Barnes of Waterloo Methodist church. Burial will follow in Waterloo Cemetery.

Memorial contributions may be made to Waterloo Methodist church in his name.

### Albert E. Gardner

#### Was One of North Sharon Bible Church Founders

Albert E. Gardner, 16430 Grass Lake Rd., Grass Lake, died Monday, March 18 at St. Joseph Mercy Hospital in Ann Arbor at the age of 84.

Mr. Gardner and his wife, Lula, came to Michigan from Ohio in 1912, and he worked as a foreman at John B. Rice Seed Co. In 1916 he became owner of the home he lived in until his death, and started a truck garden and berry farm.

In 1930, he aided in the founding of North Sharon Bible church. He and Mrs. Gardner celebrated their 61st wedding anniversary on June 12, 1973.

He is survived by his widow; one daughter, Mrs. David (Geraldine) Myers; two brothers, Howard and James Gardner, both of Jackson; two sisters, Mrs. Nellie Ostrow of Columbus, O., and Mrs. Effie Phryor of Seneca, O.; two grandsons, Robert B. and William A. Kuhl; four great-grandchildren; and several nieces and nephews.

He was preceded in death by a daughter, Lunette.

Funeral services will be conducted today, Thursday, March 21, at 1 p.m. at Stormont Chapel, Charles J. Burden & Son Funeral Home, in Grass Lake, by the Rev. William Enslen. Burial will follow in North Sharon Cemetery.

### Mrs. Ray Lamb

#### Former Pontiac Resident Dies at Methodist Home

Mrs. Ray (Jennie) Lamb of the Chelsea United Methodist Home died Saturday, March 16, at the age of 88.

Born June 23, 1885 in Houghton, she was the daughter of John and Margaret Kitts Penrose. She married Dr. Ray Lamb in 1910. He preceded her in death in 1939.

She came to the Methodist Home in May, 1969, from Pontiac. During her stay at the home she acted as piano accompanist for many of the home musical presentations.

She is survived by one son, John P. Lamb of Birmingham; five grandchildren; and eight great-grandchildren.

Funeral services were conducted Tuesday, March 19, at 10:30 a.m. at the Chelsea United Methodist home Chapel by the Rev. Richard Clemans. Burial followed in Roseland Cemetery, Royal Oak.

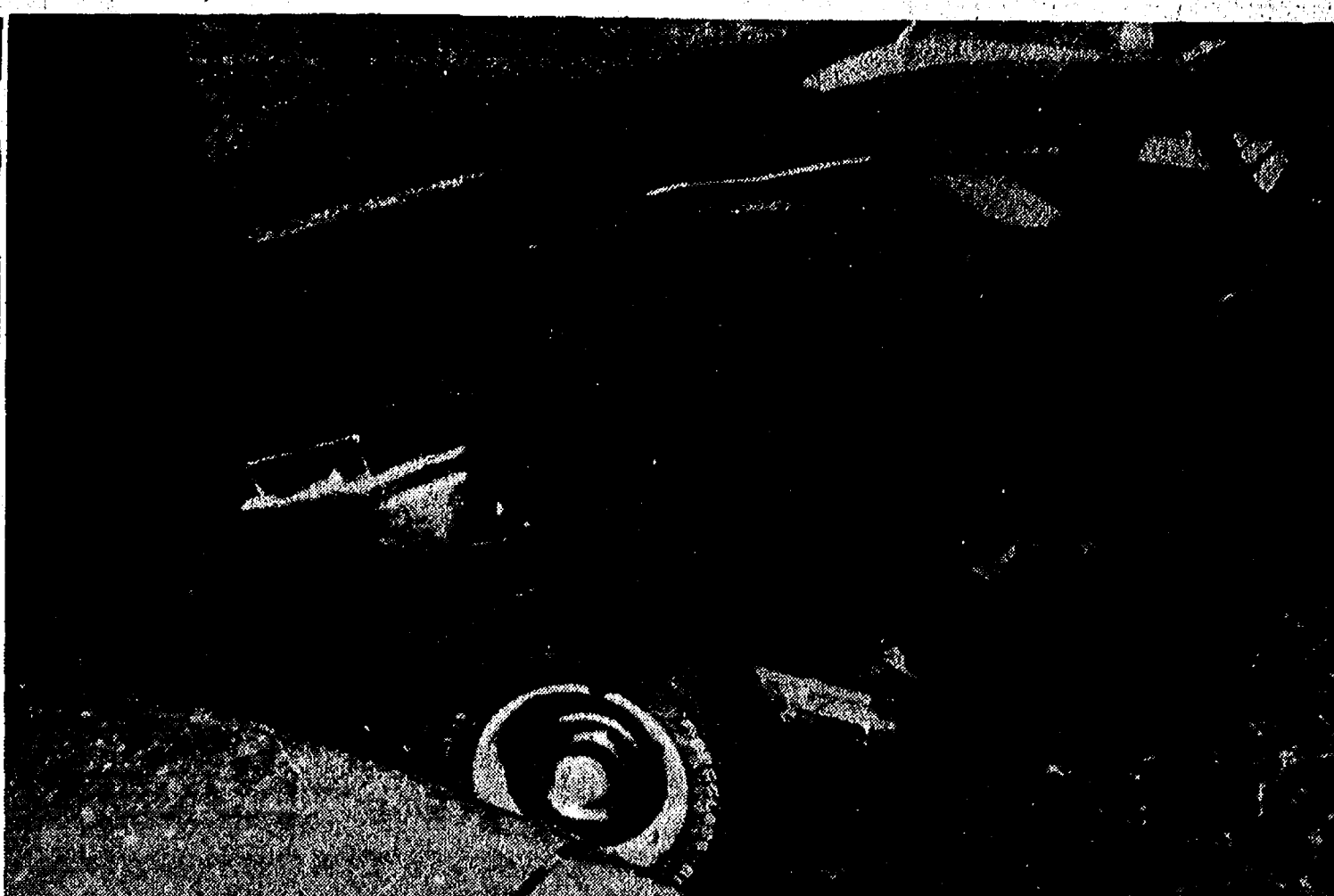
Arrangements were by Staffan Funeral Home.

## PIERSON & SONS

LICENSED GENERAL CONTRACTORS

475-8750

New Construction, Remodeling, Siding.



MANGLED REMAINS of the Chevelle belonging to Edward Beeman are stark testimony to the severity of the crash Saturday on Old US-12 that resulted in the death of Beeman and the injury of three members of the Neal family of 548 N. Main.



THE NEAL CAR was struck by Edward Beeman's careening Chevelle when he lost control on the curve of Old US-12 past Freer Rd. Mr. and Mrs. Kenneth Neal and their son, William, are all in good condition at University Hospital, improving from injuries sustained in the accident.

## Biddy Basketball Trophy Day, All Star Games Set for Saturday

Nets upset the Rockets, 16-10, in American Basketball Association action last Saturday to destroy the Nets' undefeated season, but they remained in first place, as did the undefeated Colonels in the World Basketball Association and undefeated Bulls in the National Basketball Association.

Colonels kept their position atop the WBA with a 19-7 trouncing of the last-place Stars. Celtics, in second place, kept pace with a 10-8 defeat of the Bucks.

In the other game in the ABA, the Squires and the Pacers played to an 18-18 tie. Said Jon Schaffner, one of the directors for the biddy program: "The tie was not discovered until the boys had left, and then it was too late to play it off."

In the NBA, league-leading Bulls swamped the last-place Pistons, 18-9, and second-place Lakers defeated the Hawks, 11-7.

Saturday, March 23 is trophy day for the biddy basketballers, as they will compete against youngsters in their own age group in passing, shooting, and dribbling contests. Trophies will be awarded

### WORLD BASKETBALL ASSOC. Final Standings

	W	L
Colonels	6	0
Celtics	4	2
Bucks	2	4
Stars	0	6

### AMERICAN BASKETBALL ASSOC. Final Standings

	W	L	T
Rockets	5	1	
Nets	4	2	
Pacers	2	3	1
Squires	0	5	1

### NATIONAL BASKETBALL ASSOC. Final Standings

	W	L
Bulls	6	0
Lakers	4	2
Hawks	2	4
Pistons	0	6

### Millage Election . . .

(Continued from page one)

ed taxes will eventually be paid by the individual taxpayer, the state rebating the difference of 60 cents per dollar of added taxes. In fact, most senior citizens will have rebated 100 percent of any added taxes that result from increased millage.

All board members present at Tuesday night's meeting again encouraged any resident of the district to call them with any question they might have regarding

## Sharon Church Will Open Christian School

A Christian school is scheduled to open in September 1974 at North Sharon Bible church, Sylvan and Washburne Rds., under a contract with Accelerated Christian Education (ACE) of Dallas, Tex.

A contract with ACE was signed Wednesday, March 13, by the Rev. William Enslen of North Sharon Bible church, after the congregation voted unanimously on March 6 to establish an ACE school.

Although no appeal was made to the congregation, funds were provided within four days of the original vote in sufficient amount to make possible the signing of the ACE contract.

Accelerated Christian Education is described as "a new program of learning, based on a Biblical philosophy of life—individually prescribed instructional curriculum that will provide character training and academic excellence."

The church and is in reality a parental, not a governmental, responsibility," was the comment of the Rev. Enslen.

The Rev. Enslen will attend a week-long in-depth seminar on Christian school administration, sponsored by ACE in Dallas, at some as yet unspecified date.

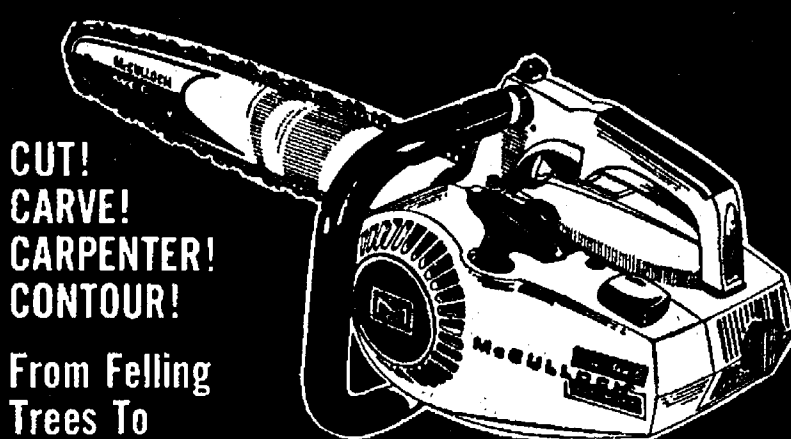
The church has authorized its Board of Deacons to act as the school board. Members include Wesley Stinehelfer, Donald Nutt, Nelson Jones, Floyd Proctor, Russell Mauer, Thomas Harris, Al Rickert, Glenn Williamson, and Jerry Woodward.

Those interested in the school may contact the church at 428-7222.

### CAVITIES?

If all the new dental cavities which occur each year were to be filled, it would cost Americans an estimated \$10 billion.

Only Professional Saw in 6 lb. class  
**MCCULLOCH POWER MAC 6**  
with Automatic Bar & Chain Oiling



CUT!  
CARVE!  
CARPENTER!  
CONTOUR!

From Felling  
Trees To  
Fancy Sculpting!  
**POWER MAC 6 IS THE CHOICE OF TREE  
SURGEONS AND CRAFTSMEN EVERYWHERE!**

• Our finest lightweight saw — only 6 1/2 pounds (less cutting attachments) • Cuts an 8" log in 6 seconds! • Outcuts many saws weighing twice as much • Mastergrip handle on top for one hand control between cuts.

New Low Price!

**\$149<sup>95</sup>**

with factory-installed 14" bar and chain

Come In Now For A Free Demonstration

**CHELSEA HARDWARE**  
110 S. Main St. Phone 475-1121

Always Insist on McCulloch chain, bars and sprockets

## THINKING OF BUILDING?



### ★ WE HAVE THE PLANS

Over 1,000 designs for you to choose from.  
— Starting at \$10.50 set  
(When part of 4-set order)

### ★ WE HAVE THE PEOPLE

From knowledgeable Countermen to accommodating Deliverymen.

### ★ WE HAVE THE PROGRAM

And we call it our

### 'OWNER-BUILDER DEAL'

— No other material supplier in the area offers a better program of savings and assistance, check it out before you build!

**CHELSEA LUMBER**

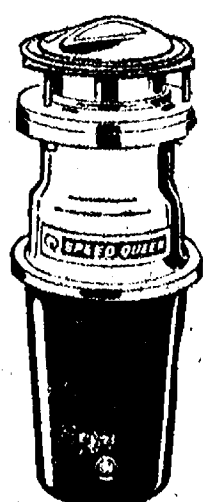
— THE FRIENDLY ONE —

AT **GAMBLES**

110 N. Main St.  
Phone 475-7472

**SPEED QUEEN STAINLESS STEEL  
FOOD WASTE DISPOSER**

MODEL DB2221N **\$39<sup>95</sup>**



- Lifetime Stainless Steel Sink Flange, Hopper, Shredder, Flywheel
- Continuous Feed One-Quart Capacity
- Dishwasher Drain Connection
- Jam Resistant Grinding Power
- Three Bolt Mounting System

the disposer to buy when you dispose of your disposer

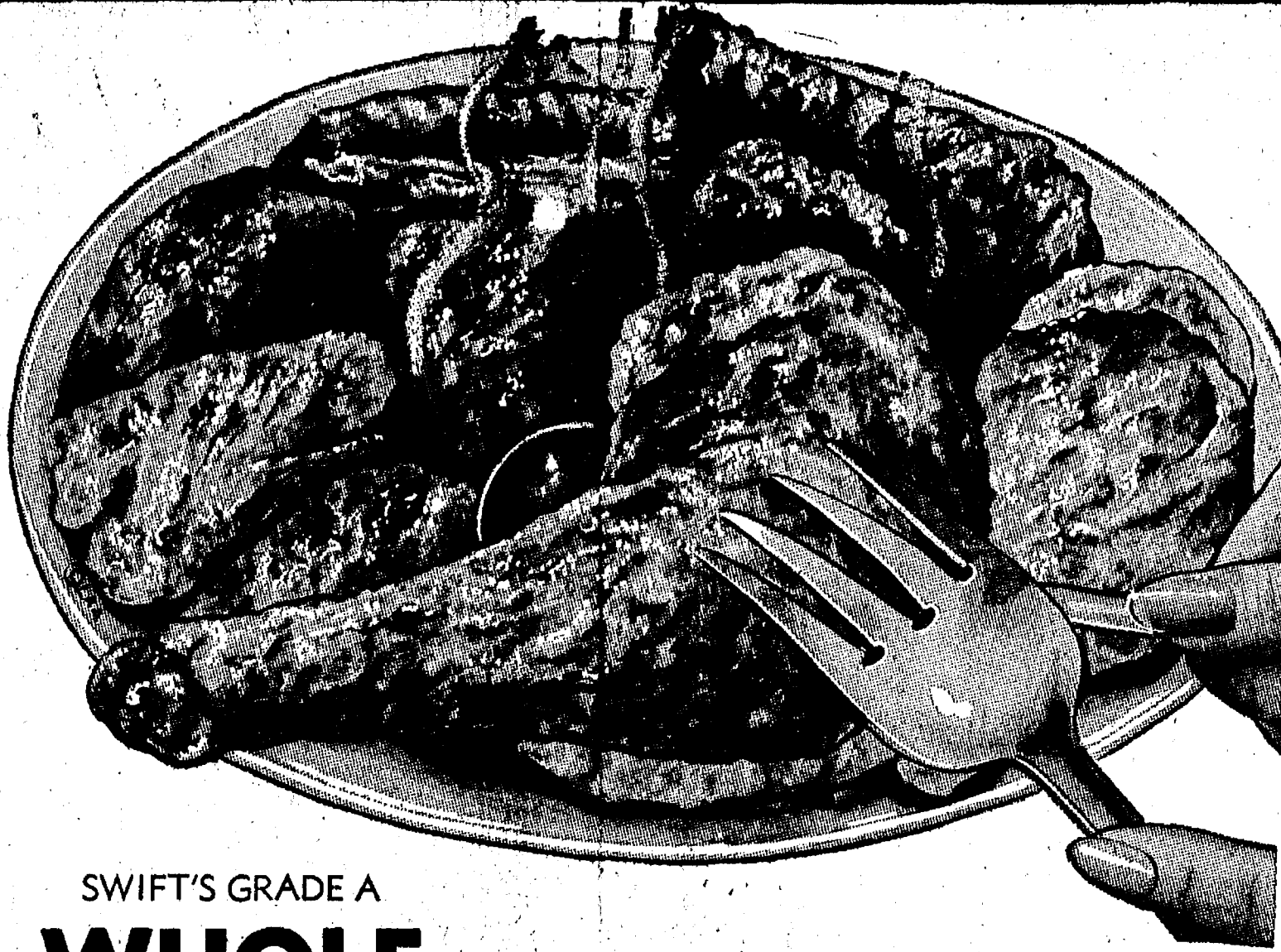




**THE MEAT PEOPLE!**  
1101 M-52, Chelsea OPEN: 9 to 9 Daily  
Corner of M-52 and Old US-12 10 to 6 Sunday

SPECIAL PURCHASE!  
SWIFT'S TENDER-LEAN  
**PORK CHOPS lb. 79¢**

**FRYERS**  
CUT-UP 45¢ lb.



SWIFT'S GRADE A  
**WHOLE 39¢ lb.**

LIMIT 3

USDA CHOICE BLADE CUT  
**CHUCK ROAST . . . . lb. 78¢**

SWIFT'S EVERSWEET  
**SLICED BACON . . . . lb. 79¢**

FARMER PEET'S BONELESS  
**BONANZA HAM . . . . lb. \$1.39**

USDA CHOICE ENGLISH CUT  
**CHUCK ROAST . . . . lb. \$1.08**

FRESH WINGS OR  
**TURKEY DRUMSTICKS . lb. 49¢**

FRESH SLICED  
**PORK LIVER . . . . lb. 49¢**

FARMER PEET'S  
**RING BOLOGNA . . . lb. 98¢**

FARMER PEET'S PURE PORK V.C.  
**SAUSAGE PATTIES . . . lb. 79¢**

SWIFT'S PREMIUM  
**SLICED BACON . . . . lb. \$1.09**

USDA CHOICE CENTER CUT  
**CHUCK STEAK . . . . lb. 88¢**

FARMER PEET'S HICKORY  
**SMOKED PICNICS . . . . lb. 59¢**

FRESH GROUND  
**ALL-BEEF HAMBURG . . lb. 98¢**

USDA CHOICE BONELESS CHUCK  
**OVEN ROAST . . . . lb. \$1.38**

FARMER PEET'S  
**PLAYTIME FRANKS . . . lb. 98¢**

12-OZ. PKG. HERRUD'S ALL-MEAT  
**SLICED BOLOGNA . . . . lb. 69¢**

HERRUD'S CHUCK  
**BRAUN-SCHWEIGER . . lb. 59¢**

USDA GOV'T INSPECTED  
**NEPTUNE TURKEYS . . . lb. 59¢**

JIMMY DEAN PURE PORK  
**SAUSAGE ROLLS . . . . 24-Oz. \$1.95**

**Family Pak Steak Bundle**  
5 lbs. Round Steak  
5 lbs. Club or Rib Steaks  
5 lbs. Cube Steaks  
5 lbs. Chuck Steaks  
**20 lbs. USDA CHOICE \$28.88**

**SEAFOOD SPECIALS!**  
Turbot Fillets . . . . lb. 79¢  
Seatrout Steaks . . . . lb. 89¢  
White Fish . . . . lb. \$1.29  
Fillet of Sole . . . . lb. \$1.59  
Lake Perch Fillets . . lb. \$1.99  
Frog Legs . . . . lb. \$2.99  
Scallops . . . . lb. \$2.99  
10-OZ. TIN  
Standard Oysters . . \$1.59

**DELI TREATS!**  
Potato Salad . . . . lb. 65¢  
Cole Slaw . . . . lb. 65¢  
Submarine Sandwich . 69¢  
1/2-LB. PKG.  
Old Fashion Loaf . . . 69¢  
1/2-LB. PKG.  
Swiss Rye Cheese . . 89¢  
1/2-LB. PKG.  
Cheese Salami . . . . 89¢

TONY'S ASSORTED (8 varieties)  
**11 INCH PIZZAS . . . . 99¢**

BORDEN'S 1/2 GALLON  
**ELSIE ICE CREAM . . . . 79¢**

BORDEN'S 6 PAK  
**SUNDAE CONES . . . . 55¢**

KEEBLER RED TAG  
**COOKIE SALE . . . . 2 for 99¢**

LIQUID  
**22 OZ. JOY . . . . 49¢**

303 CAN  
**THANK-YOU PUDDINGS . 4 for \$1**

1-LB. BAG VETS  
**DOG FOOD . . . . 9 for \$1**

SEALTEST 8-OZ.  
**DIP N' DRESSING . . . . 35¢**

AUNT JEMIMA 2-LB.  
**PANCAKE MIX . . . . 59¢**

**QUALITY FRESH PRODUCE!**  
FIRM FRESH  
**HEAD LETTUCE . . . Head 29¢**  
TROPICAL SWEET  
**MEXICAN PINEAPPLES . . lb. 49¢**  
3-LB. BAG ALL PURPOSE  
**YELLOW ONIONS . . . . 59¢**  
SWEET JUICY 100 CT.  
**FLORIDA ORANGES . . doz. 69¢**  
RED HOT  
**JALEPENO PEPPERS . . lb. 59¢**  
3-LB. BAG U.S. NO. 1  
**JONATHON APPLES . . . 79¢**  
GARDEN FRESH  
**TENDER BROCCOLI . . . lb. 59¢**

**FROZEN FOOD SPECIALS!**  
BANQUET 5-OZ.  
**COOKIN' BAGS . . 4 for \$1**  
16-OZ. SCOT LAD  
**ORANGE JUICE . . . . 49¢**  
QUEEN OF SCOT 2 LB.  
**MIXED VEGETABLES . . 59¢**  
RICH'S 10-OZ.  
**WHIP TOPPING . . . . 39¢**  
2-LB. BAG ORE IDA  
**K.K. POTATOES . . . . 49¢**  
2-LB. BAG ORE IDA REGULAR  
**F.F. POTATOES . . . . 49¢**  
HARRIS 8"  
**APPLE PIES . . . . 69¢**

**DAIRY SPECIALS!**  
SOF-SPREAD LB. TUBS  
**IMPERIAL MARGARINE . 49¢**  
9-OZ. LAKE TO LAKE MILD  
**COLBY CHEESE . . . . 79¢**  
16-OZ. JAR KRAFT  
**SANDWICH SPREAD . . 59¢**  
9-OZ. REDDI  
**WHIP . . . . 39¢**  
PILLSBURY 9.5-OZ.  
**CINNAMON ROLLS . . 3 for \$1**  
6-OZ. PKG. KRAFT SQUEEZE-A  
**SNACK CHEESE . . . . 49¢**

**VALUABLE COUPON**  
SEALTEST LO-FAT 1%  
**MILK 2 1/2 gals. 99¢**  
SAVE 60¢ WITH COUPON  
LIMIT 4 EXPIRES MARCH 24, 1974

**VALUABLE COUPON**  
LIQUID 10¢ OFF  
**IVORY 22-Oz. 39¢**  
SAVE 12¢ WITH COUPON  
LIMIT 1 EXPIRES MARCH 24, 1974

**VALUABLE COUPON**  
**HAWAIIAN PUNCH 46-Oz. Can 3 for \$1**  
SAVE 17¢ WITH COUPON  
LIMIT 3 EXPIRES MARCH 24, 1974

**VALUABLE COUPON**  
**COCA-COLA 12 Pak - 12 Oz. Can \$1.49**  
SAVE 50¢ WITH COUPON  
LIMIT 1 EXPIRES MARCH 24, 1974

**VALUABLE COUPON**  
**PET MILK 4 13-Oz. Cans 89¢**  
SAVE 19¢ WITH COUPON  
LIMIT 4 EXPIRES MARCH 24, 1974

**VALUABLE COUPON**  
HUNT'S B-B-Q  
**MANWICH 15-Oz. Can 49¢**  
SAVE 40¢ WITH COUPON  
LIMIT 4 EXPIRES MARCH 24, 1974

**VALUABLE COUPON**  
PILLSBURY  
**FLOUR 10-Lb. Bag \$1.69**  
SAVE 42¢ WITH COUPON  
LIMIT 2 EXPIRES MARCH 24, 1974

**VALUABLE COUPON**  
CHASE & SANBORN  
**COFFEE 3-Lb. Can \$2.39**  
SAVE 49¢ WITH COUPON  
LIMIT 1 EXPIRES MARCH 24, 1974

**VALUABLE COUPON**  
**MAGIC SIZING 20-Oz. 39¢**  
SAVE 16¢ WITH COUPON  
LIMIT 1 EXPIRES MARCH 24, 1974

# The Chelsea Standard

Second Section—Pages 9-14

CHELSEA, MICHIGAN, THURSDAY, MARCH 21, 1974



MORE THAN 200 PEOPLE attended Monday night's Kiwanis 50th birthday dinner, including the only living charter member of the group, M. W. McClure, pictured above with his wife, and also state Kiwanis officials, members from 12 Kiwanis clubs across the state, local village council members, and the governor of state Kiwanis, Tom Olwin, from Hillsdale.

## Girl Scouts Start Delivering Cookie Orders This Week-End

Delivery of those good-tasting cookies with a good cause behind them, Girl Scout cookies, will begin this week-end in Chelsea, according to Mrs. Jerry Satterthwaite, area cookie chairman.

This year's successful drive will enable the Huron Valley Girl Scout Council to burn the mortgage of Camp Linden, which is used annually by more than 5,000 girls, Mrs. Satterthwaite said.

Top salesmen from each troop, slated to receive special Girl Scout Trophies at their various troop meetings, are Cindy Miller, Senior Troop No. 47; Elizabeth Herrst, Cadette Troop No. 88; Michelle Alexander, Junior Troop No. 82; Sarah Leisinger, Junior Troop No. 58; Tami Schulze, Junior Troop No. 442; and Nancy Heller, Junior Troop No. 689.

Girl Scouts who sold more than 100 boxes and will receive a pin for their efforts are Teresa Hoffman, 100 boxes; Beth Bush, 106 boxes; Beth Heller, 128 boxes; Venita Scott, 133 boxes; Valisa Pletcher, 140 boxes; Dawn McDowell, 163 boxes; Lisa Luckhardt, 157 boxes; Candy Walz, 139 boxes; Sara O'Conner, 106 boxes; Amy Eisenbeler, 104 boxes; Chris Johnson, 102 boxes; Susan Prinzing, 101 boxes; and Lisa Dickson, 120 boxes.

Mrs. Satterthwaite mentioned the various troop leaders who, she said, "have been instrumental in the success of our 1974 cookie sale." Mrs. Alice Leisinger, Junior Troop No. 58; Mrs. Ruth Alexander, Junior Troop No. 82; Mrs. Janet Schulze, Junior Troop No. 442; Mrs. Robert Heller and Mrs. Grant Thomas, Junior Troop No. 689; Sally Ellenwood, Cadette Troop No. 98; and Mrs. George Miller, Senior Troop No. 47.



**FARAH® Slacks**  
**DOUBLEKNITS**  
Flare for Fashion  
Flares or Cuffed Bells  
**\$14.00 to \$20.00**

**STRIETER'S MEN'S WEAR**  
"The Place To Go for Brands You Know"







## WANT ADS

**Automotive Rust Proofing Cars and Trucks**

**Village Motor Sales, Inc.**  
IMPERIAL - CHRYSLER  
DODGE - PLYMOUTH  
Phone 475-8861  
1185 Manchester Rd., Chelsea  
Hours: 8 a.m. to 6 p.m.  
Tues. thru Fri. Until 8 Monday.  
9 a.m. to 2 p.m. Saturday  
x21H

**FOR SALE**—Hay and corn. 6710  
Wentworth Rd. Ph. 475-8339. -40

**SECURITY GUARDS**  
Chelsea, Manchester  
Whitmore Lake areas.  
Phone 761-5315  
for appointment,  
or apply at  
290 S. Wagner Rd.  
Ann Arbor

**BANFORD SECURITY SERVICE, INC.**  
x45H

**— YOUNG —**

We list and sell lake, country and town properties. Eugene Young, Real Estate & Builder. 876-3792, 11594 Dexter-Pinckney Rd., Pinckney 48169. x34H

**PITTSBURGH PAINTS**  
for that  
Quality Finish

**Chelsea Hardware**  
Ph. 475-1121 41

**Roofing, Aluminum & Vinyl Siding**  
**Gutters, Storms & Window Trim**

For Free Estimate  
Call (617) 851-8557

**Mills Construction Co.**  
5886 M-52, Stockbridge 39H

**Housekeeping Dept.**  
**Chelsea Community Hospital**

For new outpatient surgery unit  
**SUPERVISOR**—2nd shift. Hospital or operating room cleaning experience preferred. Mature, able to handle responsibility and supervision.

**GROUP LEADER**—2nd shift. Knowledge of hospital cleaning procedures helpful.

**HOUSEKEEPER**—2nd shift. Dependable, able to follow instructions.

Phone 475-1311  
**Personnel Dept.**  
An Equal Opportunity Employer. 40

**FOR RENT**—Country home, Chelsea School District, 3 to 4 bedrooms, family room, fireplace, attached garage, 2 acres, references required. Will rent with option to buy. Ph. 475-7547, evenings. x40H

# USED CARS

**AT OUR TRIANGLE LOT**  
M-52 and Old Manchester Road

71 PINTO 2-DR.	\$2495	70 MAVERICK 2-DR.	\$1395
71 OLDS OMEGA 2-DR.	\$2695	70 GALAXIE 500 4-DR.	\$1095
71 GRAN TORINO	\$3295	70 DODGE 4-DR.	\$1195
72 VOLKSWAGEN	\$2395	69 FAIRLANE 2-DR.	\$895
72 LTD 2-DR.	\$2695	69 DODGE DART	\$95
72 LTD 4-DR.	\$2695	68 PLYMOUTH 2-DR.	\$695
72 LTD SQUIRE	\$2795		
72 PINTO WAGON	\$2395		
71 MONTE CARLO	\$2195		

**TRUCKS**

71 F100 1/2-TON	\$1795
67 FORD 1/2 TON	\$795

SEE John Popovich, Dan Moore, Greg Palmer

**The Little Profit saves you more than anything you ever bargained for**

**PALMER FORD**  
Since April 1912  
Open Monday, Wednesday, Friday Till 9:00 p.m.  
All Day Saturday  
475-1301

## WANT ADS

**LEHMAN WAHL**  
Land Appraisal  
Residential and Farm  
17037 West Austin Rd  
Manchester, Mich.  
Area Code 813  
428-8886 2H

**CALL FRANK** for all your carpet cleaning jobs, morning or week-end. Needs only 3 hours to dry. Only 10c per square foot. Phone now for free estimate, 761-4328. All work guaranteed. 35H

**Fireplace Builder**  
Field stone mason, block and brick mason, tuck pointing.  
**FREE ESTIMATES**  
Call 475-8025 after 8 p.m.

**Patrick Grammatico**  
x40H

**HAMMOND ORGAN**—teachers wanted to teach in their own homes. Call Grinnell Brothers, Ann Arbor, 662-5657. 34H

**REDUCE** excess fluids with Fluidex, \$1.89. Lose weight with Dex-A-Diet capsules, \$1.98 at Chelsea Drug. -42

**VACANT LAND**

Desirably located, about 10 miles from Chelsea. Five 10-acre parcels at \$1,000 per acre, and a very special 20-acre parcel. Survey just completed. Excellent terms.

**Willis Real Estate**  
Grass Lake, Mich.  
(517) 522-8481  
(517) 522-8334 x40

**FOR SALE**

**USED** Hide-A-Bed, fair condition \$45

76" **USED** SOFA, good condition \$69.50

68" **RED PLAID** sofa, new \$399. Like new \$159.50

**ODDS AND ENDS** of carpeting, ends of rolls, discontinued patterns in small and large pieces at greatly reduced prices. Many colors.

**Merkel Home Furnishings**  
Ph. Chelsea 475-8621 x40

**4.1973 VACUUM CLEANERS**, \$26.50—Four store floor demonstrations and salesman's samples. Cannot be sold from new. Comes with all cleaning tools and even a rug shampooer. Only \$26.50 cash or terms arranged. Trades accepted. Call Ypsilanti collect, 482-8597, 9 a.m. to 9 p.m. Electro Grand. 40

**STOCKBRIDGE**

**LARGE** 4-bedroom home with den, easily re-converted to 2-unit in come. 1 1/2 baths, 1 1/2-car garage, full basement with playroom.

**Cushman Real Estate**  
(517) 787-5040 x40

67 FORD XL, 2-door hardtop, 390 engine, automatic transmission, bucket seats, new white side-wall tires. \$550. Phone 475-1534. 40

**FOR SALE**—Two 32 cal. Remington roll barrels, excellent condition. \$100 each. 428-7594 after 4:30 p.m. 40

## WANT ADS

**NOW Full Time Complete Body Shop Service**

**Stop in For An Estimate**

**PALMER FORD**  
223 S. Main St.  
475-1301 27H

**CUSTOM BUILDING**

**LICENSED & INSURED**  
**FREE ESTIMATES**

**TOTAL CONSTRUCTION SERVICES**

- Residential, commercial and industrial
- Garages
- Remodeling - Additions
- Aluminum Siding
- Roofing
- Trenching

**SLOCUM CONTRACTORS & BUILDERS**  
Serving Washtenaw County  
For Over 20 years  
20700 OLD US-18  
CHELSEA  
Phone 475-8321 or 475-7611 22H

**Pine Haven Saddlery**  
4534 Dexter Townhall Rd.  
Phone Dexter 426-4268

Complete line of English and Western equipment. 10% discount to all 4-H Club members.

Store Hours: Mon.-Sat., 9-9  
Sunday, 10-9 x52H

**NEW and REMODELING Residential Carpenter Contractor**

**M. A. LAWRENCE**  
1-517-522-4864 x1H

**BUILDERS**—House and barn roofing, all types of roof repairs, aluminum storm windows and doors, aluminum siding and gutters, awnings, porch enclosures, garage and room additions, cement work. Call Joe Hayes for free estimates, Manchester 428-8520.

**SEAMLESS ALUMINUM** Eaves, troughs installed and guaranteed. White and colors available. For free estimates, call Rick Kleinschmidt, R. D. Kleinschmidt Co., 428-8836. x45H

**KLINK EXCAVATING**

Bulldozer - Backhoe  
Road Work - Basements  
Trucking - Crane Work  
Top Soil - Demolition  
Drainfield - Septic Tank  
Trenching, 8" up

Industrial, Residential, Commercial  
CALL 475-7681 18H

**RED WING WORK SHOES**

**Foster's Men's Wear**  
40H

**MUNITH AUCTION**—100 Main St., Munith, Mich. Auction every Sunday, 6 p.m. Danny Fleming, auctioneer. x12H

**STOCKBRIDGE**, 13 acres, commercial, on M-52. (517) 851-8144. 35H

**Fry Cook Wanted**  
11 a.m. to 5 p.m.  
See Mrs. McMillan at

**Chelsea Restaurant**  
from 8:30 a.m. - 1:30 p.m., or after 5 p.m. 37H

**BABY CHICKS**—We are now taking orders for baby chicks, delivery about April 1st. We will also have chick brooders, feeders, starter, grower feed, etc. Cole's Elevator Co., Inc., Gregory, Ph. (813) 498-2755. 43

**FOR SALE**—Fully automatic Necchi sewing machine, in wood cabinet. Does zig-zag, embroidery, monogram, buttonholes, shell stitch, etc. Ph. 761-1091. x40H

## WANT ADS

**Gem Travel Trailers and Campers**

**PICK UP COVERS**

4' ————— \$100.00  
22' ————— \$170.00 and up

**Triangle Sales**  
Chelsea 475-4808 40H

**CAR RENTAL** by the day, week-end, week or month. Full insurance coverage, low rates. Call Lyle Chriswell at Palmer Motor Sales, 475-1801. 25H

**Complete Body Repair Service**

Bumping - Painting  
Windshield and Side Glass Replacement  
Free Pick-up & Delivery  
Open Monday Until 9  
CONTACT DON KNOLL  
FOR FREE ESTIMATE

**Village Motor Sales, Inc.**  
IMPERIAL - CHRYSLER  
DODGE - PLYMOUTH  
Phone 475-8861  
1185 Manchester Rd., Chelsea  
Hours: 8 a.m. to 6 p.m.  
Tues. thru Fri. Until 9 Monday.  
9 a.m. to 2 p.m. Saturday x14H

**FOR REAL DOLLAR SAVINGS**  
be sure and see us before you buy a new or used car. Palmer Motor Sales, Inc., Your Ford Dealer for over 50 years.

**DEPENDABLE TREE SERVICE**—Cutting and removing. Call 426-4118. x18H

**GIACINTO DRYWALL CO.**—Licensed contractor, winter prices now in effect. Free estimates. Ph. 878-3901. 24H

**FOR RENT**—American Legion Hall, 180. Call 475-1824. 80H

**SHOES FOR REPAIR** picked up and delivered every Saturday at Parish's Cleaners, 113 Park St., Chelsea, Mich. x16H

**D&G Allen Excavating**

Septic Tanks and Drainfields  
Back Hoe and Dozing  
Sand, Gravel and Topsoil Hauled  
Phone (517) 851-8386  
or (517) 851-8278 49H

**OFFICE SPACE** for rent, Merkel Home Furnishings. Ph. 475-8621. 30H

**FIREWOOD** for sale, \$15 per cord. Easy access. Ph. 475-8867. x38H

**FARM LAND** for rent — 3760 Schmitz Rd. Call 475-7231 or 429-9762 evenings. 41

**WEDDING INVITATIONS**—Traditional and modern. Social and business stationery. John's Shop. Call 475-7500 after 5 and week-ends. -47

**SIX SALESPeOPLE, ONE MANAGER**

Wholesale pick-up, retail delivery, average 25% profit income.

Call Mr. Niles  
475-2964 36H

**WANTED TO RENT**—Chelsea school district, 2 bedroom-plus house, apartment or duplex, anytime before June 20. Will lease. Ph. 475-8192. 36H

**1-BEDROOM HOUSE** for sale — Near lake, \$18,000. Call between 5-9 p.m. weekdays, 475-7396. 40

**DEL YOUNG EXCAVATING**—All types excavating. Ph. 683-1660. x37H

**SPECIAL** late season price on sunflower seed and bird feeds. Cole's Elevator Co., Inc., Gregory, Ph. (813) 498-2755. 43

**FREE TO GOOD HOME**—10-month-old, part cocker, part terrier. Good watchdog, good with children. Ph. 475-7284. x40

**\$50 REWARD**

for the return of miniature male Dachshund lost March 9 near Jackson and Steinbach Rds. Phone 769-5700 or 475-1600. x40

**1974 DIAL AND STITCH**, \$49.75—Left in layaway. Sew stretch material. Comes with a walnut sewing table. Beautiful pastel color. Full size head, all built-in to Zig-Zag, buttonholes, overcast, makes fancy stitches. Only \$49.75 cash or terms arranged. Trades accepted. Call Ypsilanti collect, 482-8597, 9 a.m. to 9 p.m. Electro Grand. 41

**IN CHELSEA**—Extremely sharp tri-level 3- or 4-bedroom with separate bath for the master bedroom. Family room, study and laundry room. \$47,900. Ren Estate One of Washtenaw, Realtors at 475-8693. x40

**WANT TO RENT**—8-bedroom lake-front home, from June 1 to Jan. 1, '75, by responsible family. References. Call 475-2718. x43

**WANTED TO BUY**—Barn wood and old 1 bu. slat crates. Ph. 475-2415. x42

**FLETCHER'S CARE HOME**—We care for ambulatory ladies, permanently or monthly. 2 years experience. Phone (517) 851-8808 in Stockbridge. x43

**FOR SALE**—1971 Ford 4-door sedan, loaded with extras. Well maintained and driven discreetly. Come see and make an offer. Call Clint Melvin at 475-8633. 40H

## WANT ADS

**ELECTRICAL WIRING** of all types New and rewiring. Ph. 428-4855. x20H

**EVINGER REAL ESTATE**, Alpine St., Dexter. Phone 426-8518. x18H

**SEE US** for transit mixed concrete, Klumpp Bros. Gravel Co. Phone Chelsea 475-2530, 4920 Loveland Rd., Grass Lake, Mich. x40H

**TRAVEL TRAILERS**—13-ft. and up; 10x56 ft. trailers. John R. Jones Trailer Sales, Gregory, Mich. Phone 498-2855. 43H

**FOR SALE**—1970 Chevrolet Impala, 4-door hardtop, excellent condition. Ph. 475-8005. x35H

**WANTED**—Carpentry work, any type. Charles Romine, Ph. 475-7474. 35H

**PIANO TUNING**, Chelsea and area. Facilities for reconditioning and rebuilding. Used piano sales; reconditioned grands and verticals. E. Ecklund. 426-4429. x50H

**ASPHALT PAVING**

Driveways - Parking Areas  
Landscaping - Site Work

**PREVO EXCAVATING CO.**  
(517) 851-8808 or (813) 453-1027 x43H

**FOR SALE**—Indian cents, postcards, books, foreign coins, Australian opals, and other articles. Lawrence E. Guinan, 1571 Sugar Loaf Lake. Call 475-2817. x27H

**ABC cycle insurance**, all sizes, best rates, 668-5447, days, 426-4066, evenings till 9 p.m. x43

**FOR SALE**—Bronze 30-inch electric stove. Kenmore self-cleaning oven. Like new. \$125. 426-8855. -40

**NO FUEL SHORTAGE**, No price increases, riding daily. Sharon Hills Ranch. Ph. 428-7558. 39H

**FOR SALE**—Female St. Bernard. Loves children, has shots and license. \$50. 428-7594. -40

**FOR SALE**—Two aluminum marlin houses. 12-compartment size, like new. Ph. 475-7314. 40

**FOR SALE**—1968 Chevy wagon. Power steering. \$550. Ph. 426-8279. -42

**WANTED TO BUY** a used chicken house or other small building. Ph. 475-8143. 40

**CASHIER WANTED**—Must be over 18 yrs. Apply at Rick's Market. 40

**FOR SALE**—Used Maytag washer and tub. Also, odd jobs wanted. Senior boy. Call Mrs. Hoover, 475-7851. 41

**FOR SALE**—3 maple end tables, one with attached lamp. \$40 for set. Ph. 475-8192. -40

**FOR SALE**—Double springs and mattress, bottle sterilizer and infant seat. Ph. 475-1545. 40

**FOR SALE**—Small utility trailer. 475-1471 after 6 p.m. 40

**HOME-MADE QUILTS** for sale. Phone 475-8817. x40

**FOR SALE**—Farmall H tractor with hydraulic and hydraulic cultivators. Good condition. Phone 475-8852. x40

**FANTASTIC SETTING**—9 rolling acres near Chrysler Proving Grounds. \$13,500, good terms. Manchester schools. Real Estate One of Washtenaw, Realtors at 475-8693. x40

**FOR SALE**—Various used appliances and furniture. Ph. 475-7547 evenings. x40

**GARAGE SALE**—March 23-24 at 20800 Island Lake Rd., north of Chelsea. Ph. 475-7547. x40

**FOR RENT**—2-bedroom apartment in Dexter. Available immediately. Ph. 426-8577. x40

**WANTED TO RENT**—U-M instructor needs 1- or 2-bedroom unfurnished house. 1 year lease starting May 1. Lakes area, 764-6523 before noon. 426-4005 week-ends. -x41

**WANTED TO RENT**—Family of 4 desires 2- or 3-bedroom house in Dexter-Chelsea area. Pets allowed. Up to \$210. Ph. 878-9743. x40

**FOR SALE**—Seeder, Sears, Model 597-400. Never used. Phone 475-7266. -x40

**FANTASTIC**, remodeled farm house, 5-bedroom, fireplace, family room, dining room, with barn and garage on 5 acres backing up to State land, 10 minutes north of Chelsea. \$82,000. Real Estate One of Washtenaw, Realtors at 475-8693. x40

**SPECIALIZING** in chain link fence, A-1 work. Guaranteed. Free estimates. Any size, residential, commercial repairs. Carl Herb, 474-1716. x43

**TRAILER SPACE** in Chelsea for small or medium-sized trailer. 1-484-8552. x41

**TWO-BEDROOM** apartment in Chelsea, no children or pets. Security deposit. 1-474-8552. x41

**FOR SALE**—Mobile home, 1971, 2-bedroom. Good condition. Phone 429-4517 or 871-4578. x41

**WANTED**—Couple desires to rent house on 5 or more acres. No children. References, deposit, lease. Call 1-517-484-5104 collect. x41

**FOR SALE**—Double bed, complete. Walnut headboard. Excellent condition. \$30. 878-6029. x40

**FOR SALE**—Bronze 30-inch electric stove, Kenmore. Self-cleaning oven. Like new. \$125. 426-8855. x40

**FOR SALE**—Phillip Carey roofing shingles, \$9 per square (4 square available). R. Laban, 475-2382, after 5:30. x40H

**A LARGE** unfinished 4-bedroom quadlevel just north of Stockbridge on 5 acres. Many possibilities. \$36,800. Real Estate One of Washtenaw, Realtors at 475-8693. Evenings Gwen Whitaker at 498-2004. x40

**School Board Briefs**

Present at the Chelsea Board of Education meeting on Monday, March 18, were President Haselschwardt, Trustees Stirling, Hodgson, Daniels, Irwin, Schafer, and Koenn, Superintendent Cameron, Business Manager Mills, and Principals Lane, Konklin, Wojcik, and Benedict. Several guests were also present.

The meeting was called to order at 8:05 p.m. Minutes of the March 4 meeting were approved as presented.

William Kane and Tony Foust of Manson, Jackson & Kane, Inc., Architects, discussed the schematic drawings for the high school and bus-maintenance and storage facility in detail.

Several guests raised questions regarding the agriculture program and facility in the new building program. The Board of Education and the architects assured the guests of the continuation of the agriculture program, and the inclusion of facilities for agriculture in the building program.

The Board of Education accepted the schematic drawings of the high school addition and the bus-maintenance and storage facility and authorized the architects to proceed with design development.

President Haselschwardt called a special meeting for 7:30 p.m. on Tuesday, April 2.

The Board of Education accepted the written settlement agreement regarding pay for substitute teachers and authorized the secretary to sign the agreement.

The board accepted the resignation of Mrs. Jane Cummings, effective May 10, and the resignation of Mark Ruhlig, effective March 29.

Contracts were signed for Mrs. Anne Schaffner as high school girls softball coach and for DiAnn L'Roy as high school girls track coach.

The meeting was adjourned at 2 a.m.

**Cards of Thanks**

**CARD OF THANKS**

We wish to thank all of our friends, neighbors and relatives for the flowers, mass cards, food and cards sent to our homes during the recent loss of our loved one. Everything was deeply and sincerely appreciated.

The family of  
Mary V. Schneider.

Telephone Your Club News  
To 475-1371

**YES**

WE ARE MAKING  
LONG-TERM FARM  
REAL ESTATE  
LOANS

**SEE US**

**Federal LAND BANK Association**

P. O. Box 4006  
Ph. 769-2411 3645 Jackson Rd.  
Ann Arbor, Mich. 48103

**Card of Thanks**

**CARD OF THANKS**

I would like to thank all my friends and relatives for the lovely cards and plants which I received while I was in St. Joseph Mercy Hospital, and the Chelsea Community Hospital. Everything was very much appreciated.

Martha Feldkamp.

# WANTED

4-bedroom home on 5 or 10 acres in Chelsea School District. Have client anxious to move.

**Real Estate One.**  
OF WASHTENAW  
REALTORS  
AL KLEIS 475-7322 1196 M-52, Chelsea 475-8693

# TODAY'S THOUGHT

By LOUIS BURGHARDT

What is the greatest asset we have in our town? Industry? Business? Homes? Money? Possessions? Take your choice from this sort of list, or any similar list, and you will have made a wrong selection.

Time and again it has been shown in every town that the greatest asset is friendly people. Friends and neighbors differ in type, of course. Some are solemn, serious. Others are cheerful, entertaining. Some are frivolous. Most are hopeful, sincere. Every town of course has some evil people. Spiteful people. They are FEW however, compared with the helpful, kindly, neighborly, dependable type. The sympathetic, merciful, considerate people try to keep friendships in constant repair.

Perhaps unaware of it, are not these friendly people of innate goodness demonstrating an acceptance of God's friendship? Can there possibly be any greater asset anywhere for any one? . . . BURGHARDT FUNERAL HOME, 214 East Middle St., Chelsea, Mich. Phone 475-1551.

# SPECIALS

ECKRICH ALL-MEAT

**Hot Dogs . . . 1-lb. pkg. 93c**

16-OZ. BOTTLES

**Coca-Cola . . . 8 pac 79c**

Plus Deposit

3-LB. HORMEL

**Canned Ham . . . \$3.72**

MICHIGAN U. S. NO. 1

**Yellow Onions . . . 3 lbs. 29c**

10-OZ. PET

**Whip Topping . . . 39c**

We have yellow onion sets and plants.

# KUSTERER'S

FOOD MARKET

DIAL 475-2721 WE DELIVER

# WHO: You

# WHAT: Automobile Loan

# WHERE: Chelsea State Bank

# WHY: Chelsea State Bank is offering you 9.3% actual annual interest and you pay back the loan over a 3-year period.

We think you'll agree 9.3% is unbeatable. So, if you're thinking of a car, think Chelsea State Bank.

# YES

WE ARE MAKING  
LONG-TERM FARM  
REAL ESTATE  
LOANS

**SEE US**

**Federal LAND BANK Association**

P. O. Box 4006  
Ph. 769-2411 3645 Jackson Rd.  
Ann Arbor, Mich. 48103

# CSB

35 1/2 CUSTOMER HOURS

Mon.-Thurs. . . . . 9-3  
Fri. . . . . 9-5:30  
Sat. . . . . 9-12

# USED CARS

**AT OUR TRIANGLE LOT**  
M-52 and Old Manchester Road

71 PINTO 2-DR.	\$2495	70 MAVERICK 2-DR.	\$1395
71 OLDS OMEGA 2-DR.	\$2695	70 GALAXIE 500 4-DR.	\$1095
71 GRAN TORINO	\$3295	70 DODGE 4-DR.	\$1195
72 VOLKSWAGEN	\$2395	69 FAIRLANE 2-DR.	\$895
72 LTD 2-DR.	\$2695	69 DODGE DART	\$95
72 LTD 4-DR.	\$2695	68 PLYMOUTH 2-DR.	\$695
72 LTD SQUIRE	\$2795		
72 PINTO WAGON	\$2395		
71 MONTE CARLO	\$2195		

**TRUCKS**

71 F100 1/2-TON	\$1795
67 FORD 1/2 TON	\$795

SEE John Popovich, Dan Moore, Greg Palmer

**The Little Profit saves you more than anything you ever bargained for**

**PALMER FORD**  
Since April 1912  
Open Monday, Wednesday, Friday Till 9:00 p.m.  
All Day Saturday  
475-1301



...worn on his uniform.

The successful mechanics are:  
Ken Spicer, Lawrence Koch, Larry Brown and Fred Winkle. Their areas of certification are: engine repair, front-end, brakes, engine tune-up, automatic transmission, manual transmission, and rear axle.

**PIERSON & SONS**  
LICENSED GENERAL CONTRACTORS  
**475-8750**  
New Construction,  
Remodeling, Siding.

**BOY MANOR  
TEL**  
Day, Week, or Month  
**M-52**  
**(7) 851-4213**  
(of Stockbridge)

STOP IN  
**GLASS WORKS**  
MATERIALS FULLY GUARANTEED.  
m.; Sat., 8 a.m. to 1 p.m.  
Phone (313) 475-8667  
**AND REPLACE:**  
★ MIRRORS  
★ PATIO DOORS  
★ TUB ENCLOSURES  
ing Windshields  
auto work.  
y Reglazing & Screens  
INGS OR RESIDENTIAL  
**REASONABLE PRICES**

**K**  
**Milk!**  
**ee!**  
  
er-food. Drink it daily!  
**e Farm Dairy**  
(Veinberg Dairy)  
Phone (517) 851-3000

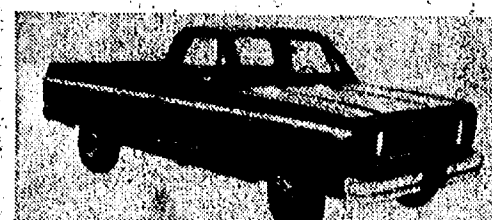
**PRICE**  
**QUAL**  
**MEETING**  
**HEREBY GIVEN,**  
**al Township Meeting**  
**ctors of the**  
**OF DEXTER**  
**w, State of Michigan**  
**held at**  
**wnship Hall**  
**Pinckney Road**  
**P.M., Eastern Standard Time**  
**on**  
**arch 30, 1974**  
**to other regular business and**  
**, a budget covering proposed**  
**and revenues of the Township**  
**consideration and approval. A**  
**e open for inspection at the**  
**public hearing on the proposed**  
**year 1974-1975 will be held**  
**WILLIAM EISENBEISER**  
**Township Clerk.**

1



# SPRING TRUCK SALE

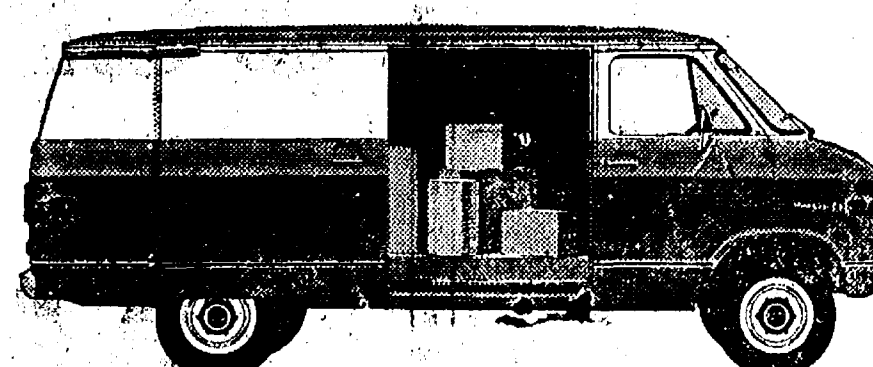
**CHEVROLET  
MAKES SENSE FOR AMERICA**



**OVER 30 TRUCKS IN STOCK TO CHOOSE FROM!**



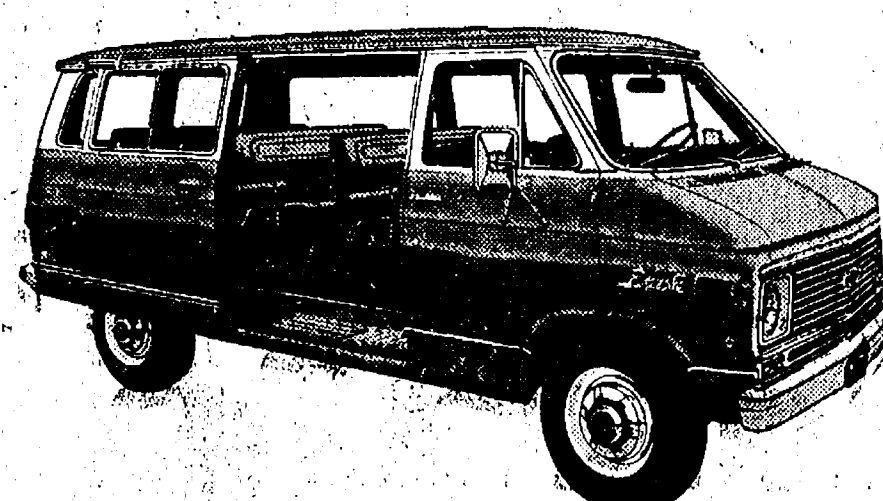
**Camaro**



**Chevy Van**



**Blazer**



**Suburban**



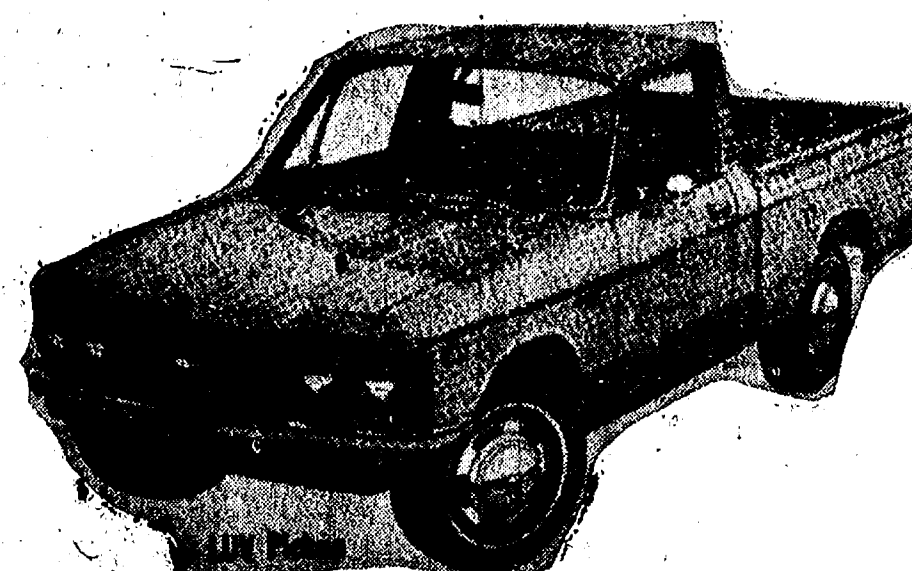
**Pickups**



**Trucks**



**Sportsvan**



**USED TRUCKS BRING HIGH DOLLARS IN THE SPRING**

Your Trade-in will never be worth more \$ \$ \$ PLUS + we have reduced all new Chevy trucks for the biggest savings ever on America's No. 1 selling truck . . . Come in today . . .

**SALES HOURS:**

Monday . . . 8 a.m. to 8:30 p.m.  
Tues. thru Fri., 8 a.m. to 6:00 p.m.  
Saturday . . . 8 a.m. to 1:00 p.m.

**LLOYD BRIDGES  
CHEVROLET**

*For Economical Transportation Buy A New Chevrolet!*

**PHONE  
475-1373**





50 YEARS OF COMMUNITY SERVICE by Chelsea Kiwanis Club was recognized at Monday night's meeting. Among honored guests were, from left, Mrs. Ruth Niehaus, pianist for the organization for nearly 40 years, and Mr. and Mrs. M. W. McClure. McClure is the only surviving charter member of the Chelsea Kiwanis Club. At ceremonies during the dinner meeting, a state official presented a legislative proclamation honoring the three. The four-tier birthday cake was presented to the club by Dexter Kiwanis Club.

### MCRC Plans Annual Meeting for Tuesday

The ninth annual meeting of the Mill Creek Research Council is scheduled for Tuesday, March 26, at 8 p.m. at Lima Township Hall. Everyone living both in the proposed park area and in the neighboring areas is urged to attend. This is an important meeting, especially since Huron-Clinton Metropolitan Authority's decision to decrease the size of the park, MCRC reports. MCRC says that this decision affects "all of us, including those living near the proposed area, and those who pay Chelsea school taxes. Report of the past year's activities and election of the board of directors will also take place at the meeting.

### Police Nab Two Waterloo Camp Escapees

Two escapees from the Camp Waterloo Corrections Facility were arrested late last Thursday evening when they attempted to elude officers in the parking lot at Longworth Plating Co. on Jackson St.

Officers Peebles and Detling had been advised that two escapees had stolen a car and left the vehicle in a ditch at Pierce Rd. and I-94 and escaped from there on foot.

When leaving the station to meet Sgt. McDougall at Pierce Rd. and I-94, they spotted the two subjects, John Thomas, 21, and Herman Strickland, 20, running across Main St. from near Heydlauff's, toward Jackson St. The officers gave chase in the patrol car up Jackson St., until the pair ran out of sight into a cove next to a truck.

Before they left the patrol car, the officers notified both Sgt. McDougall and the Washtenaw County Sheriff's Department that they needed assistance. Within minutes the two captured the first of the two escapees, as he hid beneath a truck.

When Sgt. McDougall and sheriff's deputies arrived, the group split into pairs and turned up the other escapee some 20 minutes later, hiding behind the same truck where the other had been found.

Both were arrested and taken to Washtenaw County Jail by deputies Hill and Fuller. Camp Waterloo was notified of their capture.

# We Urge Support for the CHELSEA SCHOOL DISTRICT Millage Request on Tuesday, March 26

The "Bursley Bill" recently passed by the State Legislature helps to provide a higher level of education for the poorer school districts of the state. However, Chelsea School District residents must help themselves. To maintain our present level of education we must pay more. Because we know the importance of good education, we are willing to pay this new price!

Central Fibre Products

Dana Corp.

Rockwell International Corp.

Chelsea Milling Co.

Federal Screw Works

## Today's Best Buy!

Get much more  
for your money today  
with an appliance  
by General Electric!

Holds over twice as much as a 20-year old 2-door refrigerator but costs \$78 less today!

In 1952 8.7 cu. ft. NH-8J \$467\*

20.8 cu. ft. No-Frost 2-Door General Electric Refrigerator-Freezer

Today \$389\* Model TBF-21D

FREEZER STORES UP TO 243 POUNDS

GE

#### Compare!

Value for Value	1952 Model NH-8J	TODAY Model TBF-21D
Capacity cu. ft.	8.7	20.8
Freezer lbs.	52	243 (4 1/2 times as big)
Defrosting	Fresh Food only	100% Frost Free
Shelves (adjustable)	NO	YES
Wheels	NO	YES
Color available	NO	YES
Automatic Ice	Not available at any cost	Optional (at extra cost)

\*Manufacturer's suggested retail price. See your GE dealer for price and terms.

# HEYDLAUFF'S

113 North Main, Chelsea

Phone 475-1221